

Product Datasheet - Technical Specifications



More information in our Web-Shop at ► www.meilhaus.com

Your contact

Technical and commercial sales, price information,
quotations, demo/test equipment, consulting:

Tel.: **+49 - (0)81 41 - 52 71-0**

FAX: **+49 - (0)81 41 - 52 71-129**

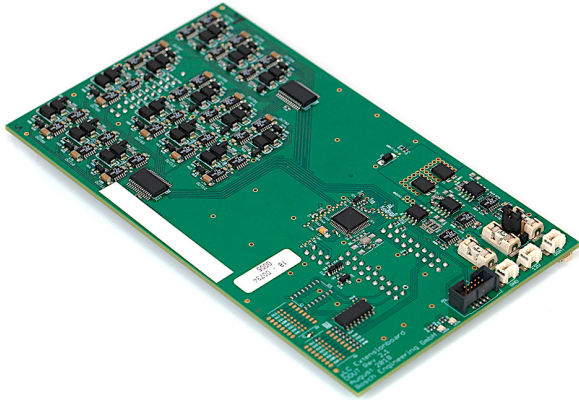
E-Mail: sales@meilhaus.com

Meilhaus Electronic GmbH
Am Sonnenlicht 2
82239 Alling/Germany

Tel. **+49 - (0)81 41 - 52 71-0**
Fax **+49 - (0)81 41 - 52 71-129**
E-Mail sales@meilhaus.com

Mentioned company and product names may be registered trademarks of the respective companies. Errors and omissions excepted. © Meilhaus Electronic.

Expansion Board Digital Outputs



- ▶ 14 additional digital outputs included
- ▶ Short circuit proof
- ▶ Change to individual states possible: Low, High, High-Z

The **Expansion Board Digital Outputs** extends the functions of the **μLC Test System** without intervening the software and without activating additional mechanisms. Digital Outputs provides 14 digital outputs, which can be switched individually to the states **Low**, **High** or **High-Z**. All outputs can be switched simultaneously.

Application

Output voltage	Min	Max
μLC 3.1	-1 V	24 V

Technical Specifications

DC characteristics

Parameters	Conditions	Value
U_{out}	Output = Low	<1.1 V
$U_{in}-U_{out}$	Output = High	<1.8 V
R_{out}	Output = High-Z	>10 MOhm
$I_{out}^{* prot}$	Channel shutdown threshold	±1 A

Parameters	Conditions	Value
$\Sigma I_{out}^{* prot}$	Shutdown threshold total current all outputs	±3.33 A

Timing measured at $U_{in} = 24 V$

Parameters	Conditions	Value
t_{rise}	Load of 500 Ohm to GND	58 μs
	Load of 500 Ohm to 24 V	0.3 μs
	Without load	62 μs
t_{fall}	Load of 500 Ohm to GND	0.8 μs
	Load of 500 Ohm to 24 V	5.5 μs
	Without load	12 μs
$t_{restart}^*$		33.6 ms

*: Restart time after overcurrent

Ordering Information

Expansion Board Digital Outputs
Order number **F02U.V02.904-01**