

## Product Datasheet - Technical Specifications



More information in our Web-Shop at ► [www.meilhaus.com](http://www.meilhaus.com)

### Your contact

Technical and commercial sales, price information,  
quotations, demo/test equipment, consulting:

Tel.: **+49 - (0)81 41 - 52 71-0**

FAX: **+49 - (0)81 41 - 52 71-129**

E-Mail: [sales@meilhaus.com](mailto:sales@meilhaus.com)

**Meilhaus Electronic GmbH**  
Am Sonnenlicht 2  
82239 Alling/Germany

Tel. **+49 - (0)81 41 - 52 71-0**  
Fax **+49 - (0)81 41 - 52 71-129**  
E-Mail [sales@meilhaus.com](mailto:sales@meilhaus.com)

Mentioned company and product names may be registered trademarks of the respective companies. Errors and omissions excepted. © Meilhaus Electronic.



## VOLTAGE, CONTINUITY, AND CURRENT TESTER

# FLIR VT8™

The FLIR VT8 is a high-quality voltage, continuity, and current tester, ideal for electricians and service technicians who troubleshoot and verify electrical installations or systems within commercial and light industrial facilities. The FLIR VT8's optimized and open-jaw design allows it to fit into tight spaces and reliably measure large-diameter cables. Extensive measurement features make the FLIR VT8 a versatile tool – just one meter can get the job done. Carry the compact tester in your pocket to be ready at any moment for easy troubleshooting.

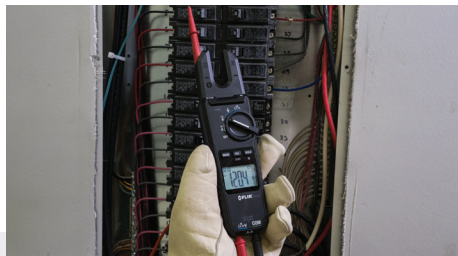
Choose from two models: the FLIR VT8-600 with a CAT III-600 V /CAT IV-300 V safety rating and a 100 A/600 V measuring range; or the FLIR VT8-1000 with the CAT III-1000 V/CAT IV-600 V safety rating and a 200 A/1000 V measuring range.



### RUGGED AND SAFE

Made with the quality and reliability you have come to expect from FLIR test and measurement tools

- Work more safely with the CAT IV safety ratings
- Safely store test leads when not in use with the built-in test lead holder
- Keep the test leads out of your way when you're not using them - the length is short enough to minimize interference, yet long enough to get the job done



### RICH FEATURES

Equipped with the capabilities you need for one versatile troubleshooting tool

- Measure AC/DC voltage and current, continuity, resistance, and capacitance
- Work efficiently in dimly lit areas using the bright LED worklight and backlit display
- Detect live AC voltages with the built-in non-contact voltage (NCV) detector
- Improve accuracy of readings with True RMS measurements



### FLEXIBLE, EASY TO USE

Designed for long, trouble-free operation so you can focus on the task at hand

- Take measurements in tight spaces with the optimized jaw design, and measure large-diameter cables with the wide jaw opening
- Operate the meter with one hand thanks to the compact, ergonomic design
- View information easily at any distance on the large multi-function LCD display

## SPECIFICATIONS

Part Number	VT8-600	VT8-1000
<b>Electrical Measurement</b>		
True RMS Voltage and Current	Yes	
Auto-Ranging	Yes	
AC/DC Current Range	100 A	200 A
AC/DC Current Resolution	0.1 A	
AC (50 to 60 Hz) / DC Current Accuracy	±2.5%	
AC/DC Voltage Range	600 V	1000 V
AC/DC Voltage Resolution	0.1 V	
AC (45 to 66 Hz) / DC Voltage Accuracy	±1.5%, ±1.0%	
Resistance	60.00 MΩ ± (1.5%)	
Continuity Check Threshold	10 Ω to 100 Ω	
Capacitance	600 μF ±4.0%, 6000 μF ±10.0%	
Non-Contact Voltage Detector (NCV)	≥100 Vrms; ≤10 mm distance (LED/buzzer alerts)	
Additional Measurement Functions	DCA zero, relative mode (AC/DC voltage, AC current, and capacitance), data hold	
<b>General</b>		
Worklights	White LED	
Jaw Opening	15.5 mm (0.61 in)	
Display	6000-count backlit multi-function LCD	
Display Rate	Approximately 3 times per second	
Polarity	Automatic display of positive and negative polarity	
Over-Range Indication	"OL" or "-OL" displayed	
Auto Power Off	After 15 minutes	
Power Source	2 x AA alkaline batteries	
Low battery Indication	Battery symbol is displayed when batteries need changing	
<b>Environmental Data</b>		
Operating Temperature	-10 to 50°C (14 to 122°F)	
Relative Humidity	95% max; 5 to 30°C (41 to 86°F) / 75% max; 30 to 40°C (86 to 104°F) / 45% max; 40 to 50°C (104 to 122°F)	
Storage Temperature	-30 to 60°C (-22 to 140°F), batteries not installed	
Drop Test	2 m (6.6 ft)	
<b>Physical Data</b>		
Dimensions: (W × H × D)	210 mm × 53 mm × 35 mm (8.27 in × 2.1 in × 0.67 in)	
Weight	163.7 g (5.7 oz) including batteries	
<b>General Information</b>		
Warranty	Limited 3-year	
Certifications	C-UL-US, CE, RCM	
Safety Category Rating	CAT IV-300 V CAT III-600 V	CAT IV-600 V CAT III-1000 V
	EN 61010-1 EN 61010-2-032 EN 61010-2-033	

Specifications are subject to change without notice.

Equipment described herein is subject to US export regulations and may require a license prior to export. Diversion contrary to US law is prohibited. Imagery for illustration purposes only. Specifications are subject to change without notice. ©2018 FLIR Systems, Inc. All rights reserved. rev 03/19

18-1885-INS



The World's Sixth Sense®