

## Product Datasheet - Technical Specifications



More information in our Web-Shop at ► [www.meilhaus.com](http://www.meilhaus.com) and in our download section.

### Your contact

**Technical and commercial sales, price information,  
quotations, demo/test equipment, consulting:**

Tel.: **+49 - 81 41 - 52 71-0**

FAX: **+49 - 81 41 - 52 71-129**

E-Mail: [sales@meilhaus.com](mailto:sales@meilhaus.com)

Downloads:

[www.meilhaus.com/en/infos/download.htm](http://www.meilhaus.com/en/infos/download.htm)

**Meilhaus Electronic GmbH** | Tel. **+49 - 81 41 - 52 71-0**  
Am Sonnenlicht 2 | Fax **+49 - 81 41 - 52 71-129**  
82239 Alling/Germany | E-Mail [sales@meilhaus.com](mailto:sales@meilhaus.com)

Mentioned company and product names may be registered trademarks of the respective companies. Prices in Euro plus VAT. Errors and omissions excepted.  
© Meilhaus Electronic.

[www.meilhaus.de](http://www.meilhaus.de)

# IT6900A Wide-range Programmable DC Power Supply



## Applications

DC-DC power module, battery charging and sensors, etc.

IT6900A series wide range programmable power supply has built-in standard RS232, USB, GPIB, RS485 and analog interface (RS485 and analog interface are just for IT6900B), supports SCPI protocol, facilitate remote control, industrial PLC control and the formation of intelligent test platform. Remote compensation terminals avoid the problem of inaccurate testing caused by voltage drop on the wire. Low ripple, low noise and built-in digital voltmeter make IT6900A easy to do external measurement. IT6900A can be widely used in testing DC-DC power supply module, battery charging and sensors and other test areas.

## Feature

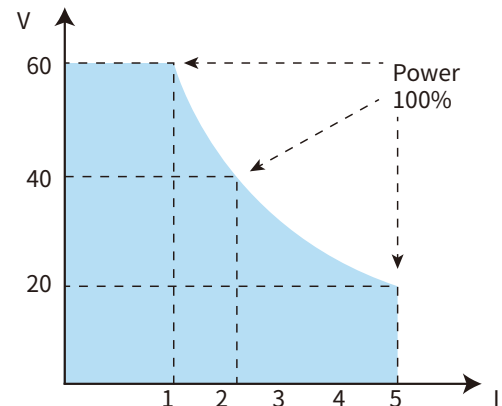
- VFD display
- Adjust voltage and current via knob or numerical key pad
- High accuracy and high resolution
- Adjust digital step value via cursor
- Output voltage and current values accordance with procedure
- Output Timer(0.1 ~ 99999.9S) Function
- Low ripple and low noise
- Remote Sense Function
- Intelligent fan control
- Rich SCPI instructions to facilitate the formation of intelligent test platform
- Support front and rear panel output
- Optional external analog function
- Standard communication interface RS232/USB/GPIB

Model	Voltage	Current	Power	Size
IT6922A	60V	5A	100W	1/2 2U
IT6932A	60V	10A	200W	1/2 2U
IT6933A	150V	5A	200W	1/2 2U
IT6942A	60V	15A	360W	1/2 2U
IT6952A	60V	25A	600W	1/2 2U
IT6953A	150V	10A	600W	1/2 2U

\*IT6900A is standard model; IT6900B is optional for needing RS485 interface and external analog interface

## Auto-range Function

IT6900A series power supply can achieve the combined output of multiple voltage and current at a fixed power. Single power supply can meet different DUT tests with high voltage low current or high current low voltage, at the same time, because the output of voltage and current is controlled by the limit power, it will show the switching of voltage and current auto ranging.



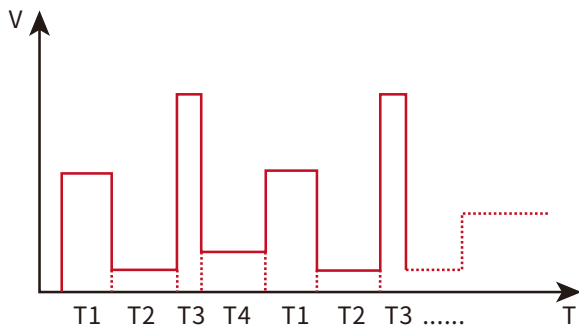
IT6932A I-V Curve Graph

### Remote Sense

In order to avoid the voltage drop caused by the length of the wire connecting the load, the remote test allows measurement directly on the terminal of the test object to improve the measurement accuracy. S +, S - is the remote measurement terminal, +, - is the output positive and negative terminals. When using the remote measurement function, it is necessary to disconnect the wires connected to the "+, -" terminals and lead S +, S - to the test object.

### List Mode

List mode allows user to create a sequence of steps, store it into the power supply's non-volatile memory and execute the input parameters for generating a list include the name of the list file, the input steps (no more than 150 steps), the step time (the minimum is 100mS) and the value of each step.



### OVP Functions

IT6900A series power supply provides OVP function. The over voltage protection point of the power supply can be set via the keys on the panel. Once power supply is protected (OVP), the output will be off immediately and "OVP" indicator light will be lit, the VFD display "OVER VOLT".



Separate Local key can quickly switch to panel operation mode from PC operation mode

### Built-in DVM

IT6900A provides a built-in digital meter which can measure DC volts in a range from 0.001V to 61.000V. The voltage value is displayed on the left bottom field of the display.

### Timer Function

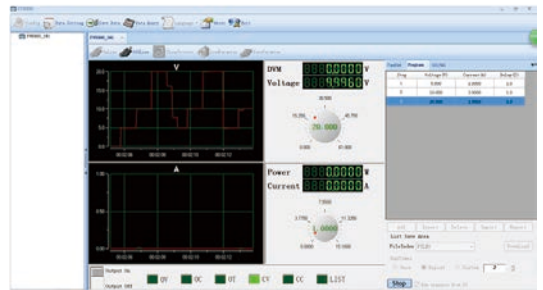
IT6900A series supports output timer function, in ON mode, the indicator light "Timer" will be lit on the VFD screen. When output of power supply is opened, timer will begin to work, after reaching the definite time, output will be off automatically. Timing output time range is 0.1s~99999.9s.

### Optional external analog interface

The rear panel DB9 analog interface is connected via cable and external DB9 socket board. The corresponding pin on the DB9 socket board is added 0~10V voltage to simulate the voltage or current output from 0 to full-scale.

### IT9000 PC software

IT6900A series has built-in RS232, USB, GPIB and other communication interfaces, and provides free IT9000 series software. Using PC software, IT6900A can easily remote control, set voltage and current, record storage data, programming, and test automatically.



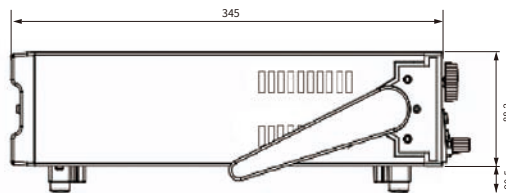
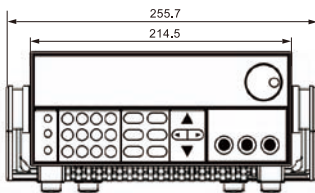
## IT6900A Specifications

		IT6922A	IT6932A	IT6933A
Rating (0°C~40°C)	Voltage	0~60V	0~60V	0~150V
	Current	0~5A	0~10A	0~5A
	Power	100W	200W	200W
Load regulation ±(% of output+offset)	Voltage	≤0.01%+3mV	≤0.01%+10mV	≤0.01%+20mV
	Current	≤0.05%+2mA	≤0.05%+4mA	≤0.01%+6mA
Power regulation ±(% of output+offset)	Voltage	≤0.01%+3mV	≤0.01%+10mV	≤0.01%+20mV
	Current	≤0.05%+2mA	≤0.05%+4mA	≤0.01%+6mA
Programmng resolution	Voltage	1mV	1mV	1mV(<100V),10mV(≥100V)
	Current	0.1mA	1mA	0.1mA
Readback value resolution	Voltage	1mV	1mV	1mV(<100V),10mV(≥100V)
	Current	0.1mA	1mA	0.1mA
Programmng accuracy (Within 12 months) (25°C±5°C) ±(% of output+offset)	Voltage	≤0.03%+5mV	≤0.03%+5mV	≤0.04%+30mV
	Current	≤0.1%+5mA	≤0.1%+10mA	≤0.1%+10mA
Readback accuracy (Within 12 months) (25°C±5°C) ±(% of output+offset)	Voltage	≤0.03%+5mV	≤0.03%+5mV	≤0.04%+30mV
	Current	≤0.1%+5mA	≤0.1%+10mA	≤0.1%+10mA
Ripple (20Hz ~20MHz)	Voltage	≤5mVp-p	≤8mVp-p	≤30mVp-p
	Current	≤5mArms	≤6mArms	≤6mArms
Rise Time	Voltage	≤150mS(10%-90%)	≤150mS(10%-90%)	≤200ms
Fall time	Voltage	≤2S(10%-90%)	≤2S(10%-90%)	≤150ms
Size (mm)	214.5mmW×88.2mmH×354.6mmD			
Weight	7.7Kg		7.7Kg	7.7Kg

		IT6942A	IT6952A	IT6953A
Rating (0°C~40°C)	Voltage	0~60V	0~60V	0~150V
	Current	0~15A	0~25A	0~10A
	Power	360W	600W	600W
Load regulation ±(% of output+offset)	Voltage	≤0.01%+30mV	≤0.01%+30mV	≤0.01%+25mV
	Current	≤0.05%+6mA	≤0.1%+10mA	≤0.5%+10mA
Power regulation ±(% of output+offset)	Voltage	≤0.01%+30mV	≤0.01%+30mV	≤0.01%+25mV
	Current	≤0.05%+6mA	≤0.1%+10mA	≤0.5%+10mA
Programmng resolution	Voltage	1mV	1mV	1mV (< 100V) 10mV (> 100V)
	Current	1mA	1mA	1mA
Readback value resolution	Voltage	1mV	1mV	1mV (< 100V) 10mV (> 100V)
	Current	1mA	1mA	1mA
Programmng accuracy (Within 12 months) (25°C±5°C) ±(% of output+offset)	Voltage	≤0.03%+5mV	≤0.03%+5mV	≤0.03%+20mV
	Current	≤0.1%+15mA	≤0.1%+25mA	≤0.1%+25mA
Readback accuracy (Within 12 months) (25°C±5°C) ±(% of output+offset)	Voltage	≤0.03%+5mV	≤0.03%+5mV	≤0.03%+20mV
	Current	≤0.1%+15mA	≤0.1%+25mA	≤0.1%+25mA
Ripple (20Hz ~20MHz)	Voltage	≤15mVp-p	≤20mVp-p	≤50mVp-p
	Current	≤8mArms	≤15mArms	≤15mArms
Rise Time	Voltage	≤200ms(10%-90%)	≤150mS(10%-90%)	≤150ms
Fall time	Voltage	≤2.5s(10%-90%)	≤2S(10%-90%)	≤7s
Size (mm)	214.5mm*88.2mm*445mm			
Weight	7.7Kg		15Kg	15Kg

\*This information is subject to change without notice

IT6900A Dimension (Unit: mm)



- **IT6922A/IT6932A/IT6933A/IT6942A:**  
214.5mmW x 88.2mmH x 345mmD
- **IT6952A/IT6953A:**  
214.5mmW x 88.2mmH x 446mmD