

Product Datasheet - Technical Specifications



More information in our Web-Shop at ► www.meilhaus.com and in our download section.

Your contact

Technical and commercial sales, price information,
quotations, demo/test equipment, consulting:

Tel.: **+49 - 81 41 - 52 71-0**

FAX: **+49 - 81 41 - 52 71-129**

E-Mail: sales@meilhaus.com

Downloads:

www.meilhaus.com/en/infos/download.htm

Meilhaus Electronic GmbH | Tel. **+49 - 81 41 - 52 71-0**
Am Sonnenlicht 2 | Fax **+49 - 81 41 - 52 71-129**
82239 Alling/Germany | E-Mail sales@meilhaus.com

Mentioned company and product names may be registered trademarks of the respective companies. Prices in Euro plus VAT. Errors and omissions excepted.
© Meilhaus Electronic.

PROFINET-INspektor® NT

Function

The **PROFINET-INspektor® NT** is a passive data collector that analyzes telegram traffic in PROFINET and Ethernet networks in terms of events like

- Utilization rate,
- Speed,
- Data throughput,
- Telegram jitter,
- Repeat telegrams,
- Error telegrams,
- Device diagnostics and
- Device failures.

This information reflects the current condition of the communication quality in the network concerned and provides the basis for a condition-based maintenance. By storing data in the device events on the bus may also be traced and evaluated later. Due to an integrated web server the network status can be displayed on any PC by internet browser without requiring additional software.

It is recommended to install the PROFINET-INspektor® permanently in the network connection between controller and first IO device or switch, since the majority of communication merges typically in this connection.

New features compared to predecessor

- Display that shows errors directly
- Net load displayed with resolution in milliseconds
- Alarms when unknown devices appear
- Option to carry out active or passive network diagnosis
- Uninterrupted monitoring, even at high net load

Technical data

- Voltage supply: +24V DC ±10%
- PROFINET
 - Protocols: RT, CBA
 - Connection: RJ45 (IN / OUT)
 - Baud rate: 10 / 100 Mbps
- Ethernet
 - Baud rate: 10 / 100 Mbps
 - Connection: RJ45
 - MDI/MDIX

General data

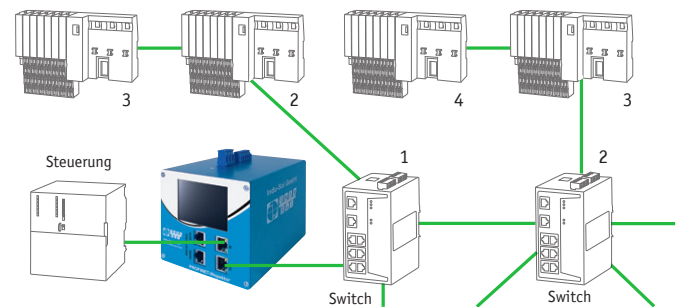
- Installation: 35 mm DIN top-hat rail
- Dimensions (H x W x D): 105 x 105 x 124 mm
- Protective system: IP20
- Ambient temperature: +5 °C bis +55 °C

Scope of delivery StarterKIT

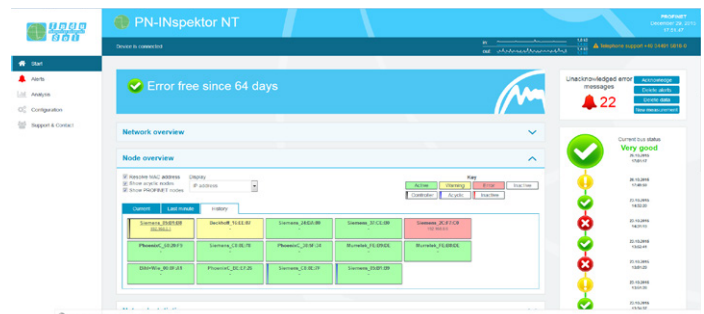
- PROFINET-INspektor® NT
- Power pack
- Patch cable
- Case and Manual



PROFINET-INspektor® NT



PROFINET-INspektor® NT „Its position in network“



Web interface

Ordering details	Art. No.
PROFINET-INspektor® NT	124030100
PROFINET-INspektor® NT StarterKIT	124030120