

Product Datasheet - Technical Specifications



More information in our Web-Shop at ► www.meilhaus.com

Your contact

Technical and commercial sales, price information,
quotations, demo/test equipment, consulting:

Tel.: **+49 - (0)81 41 - 52 71-0**

FAX: **+49 - (0)81 41 - 52 71-129**

E-Mail: sales@meilhaus.com

Meilhaus Electronic GmbH
Am Sonnenlicht 2
82239 Alling/Germany

Tel. **+49 - (0)81 41 - 52 71-0**
Fax **+49 - (0)81 41 - 52 71-129**
E-Mail sales@meilhaus.com

Mentioned company and product names may be registered trademarks of the respective companies. Errors and omissions excepted. © Meilhaus Electronic.

SEFRAM 9831

**Handheld Thermography Camera
160x120 resolution, 19200 pixels**



Handheld Thermography Camera With automatic hotter spot detection

The handheld thermography camera, specially designed for temperature measurement in transformer substation. It's equipped with a 160x120 resolution thermal detector. It helps the staff to quickly find the fault according to accurate temperature measurement of high temperature targets in the environment. Meanwhile it provides assistant decision and ensure safety. The device is mainly applied to various industries, such as Building, HVAC, and auto industry.

Functions :

- **Thermography :**
Device detects the real-time temperature, and display it on the screen.
- **Storage :**
Device is equipped with replaceable memory card to store recorded captured snapshots, and important data.
- **Palette :**
Device supports 4 colors palette.
- **Laser Light Supplement :**
Long-distance laser light supplement to point the thermography target.

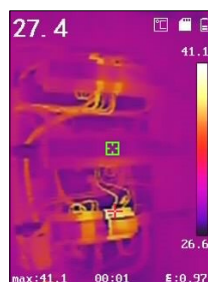
Key features :

- Image sensor 160x120 resolution
- 320 x 240 resolution 2.4" LCD display
- Built-in rechargeable Li-ion battery
- Up to 8 hours continuous operating
- Thermometry D:S = 75:1, a circular target with a diameter of 1 cm can be measured accurately within a distance of 75 cm

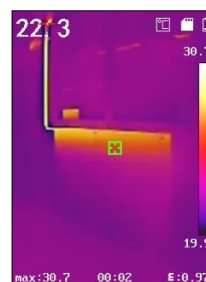


SEFRAM 9831

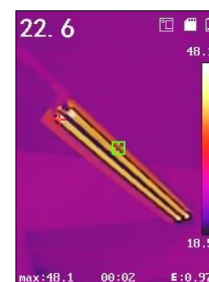
Applications :



Find easily the bad connections or the overheating in the electrical cabinets.



Verify the good functioning of heating systems.



Detect the hot spots of the electrical installations.



Analyse the thermal bridges on buildings.

Handheld Thermography SEFRAM 9831

Specifications

Thermal Module	Image sensor	Uncooled Focal Plane Arrays
	Max. Resolution	160 × 120 (19200 pixels)
	Pixel Pitch	17µm
	Response waveband	8µm to 14µm
	NETD	< 40mK (@ 25 °C, F#=1.0)
	Field of View	37.2° × 50°
	Focal length	3.1 mm
	IFOV (mrad)	5.48 mrad
	Min Focus Length	≥ 150 mm
Image Display	Aperture	F 1.1
	Monitor	320 × 240 resolution 2.4" LCD display
Thermography	Color palette	Black hot, White hot, Rainbow, Ironbow
	Rules	3 thermometry points: Max temperature, Min temperature, Center temperature
	Thermometry Range	-20 °C to 550 °C (-4F to 1022 F)
	Thermometry Accuracy	Max (±2 °C, ±2 %)
Battery	Thermometry Distance	D:S = 75:1
	Battery Type	Rechargeable Lithium Battery
Functions	Battery operating Time	8 hours continuous
	Laser Light	Support (Point to the thermography target)
	Storage	Swappable memory card (default 8GB, support up to 128GB storage)
	Photo	Thermal image
General	Language	English
	Power	3.7 V DC/0.4 A
	Power consumption	Less than 1.2 W
	Hardware Interface	micro USB
	Working Temperature	-10 °C to 50 °C (14 F to 122 F)
	Protection level	IP54
	Dimensions	196 mm × 117 mm × 59 mm (7.7 " × 4,6 " × 2.3 ")
Weight	350 g (0.77 lb)	

Supplied with : Power Adaptor, USB cable, 8GB memory card, user manual, wrist strap.

■ Optionnal accessory



carrying bag - P/N: SC521