

Product Datasheet - Technical Specifications



More information in our Web-Shop at ► www.meilhaus.com

Your contact

Technical and commercial sales, price information,
quotations, demo/test equipment, consulting:

Tel.: **+49 - (0)81 41 - 52 71-0**

FAX: **+49 - (0)81 41 - 52 71-129**

E-Mail: sales@meilhaus.com

Meilhaus Electronic GmbH
Am Sonnenlicht 2
82239 Alling/Germany

Tel. **+49 - (0)81 41 - 52 71-0**
Fax **+49 - (0)81 41 - 52 71-129**
E-Mail sales@meilhaus.com

Mentioned company and product names may be registered trademarks of the respective companies. Errors and omissions excepted. © Meilhaus Electronic.

Sefram

SEFRAM 9816B

4 inputs data logger thermometer, Bluetooth® interface

Record to 4 simultaneous temperatures with thermocouple type K, J, E, T, N, R, S.

New

SEFRAM 9816B is the new data logger thermometer with 4 inputs. It's compatible with K, J, E, N, R, S thermocouple types. The tilt stand makes the measurement viewing easy when the thermometer is set down on a desk. The large LCD backlight screen enable to read the data in any environment. The fast sample rate allows to capture fast temperature changes.

SEFRAM 9816B is provided with USB interface enable to collect and process the data with provided software PC. SEFRAM 9816B is further provided with Bluetooth® interface permitting to operate your device, process and view records compatible with Smartphones : iOS and Android APP available to free download from APP store.

Application

- Compact and easy to use
- High precision in measurement
- Alarms setup possible

Features

- T1-T2 function
- Hold function
- Alarm function
- Adjustable auto-power off time
- Fast response time with high accuracy
- Thermocouple type K, J, E, T, N, R, S
- Min / Max / Avg measurement each channel
- USB interface, PC software provided
- Bluetooth® interface compatible with Smartphones : iOS and Android APP available to free download from APP store
- Large backlight LCD screen : all channels displayed simultaneously
- 32,000 data logger records each channel
- Recall function (to 100 instant save-readings storage)

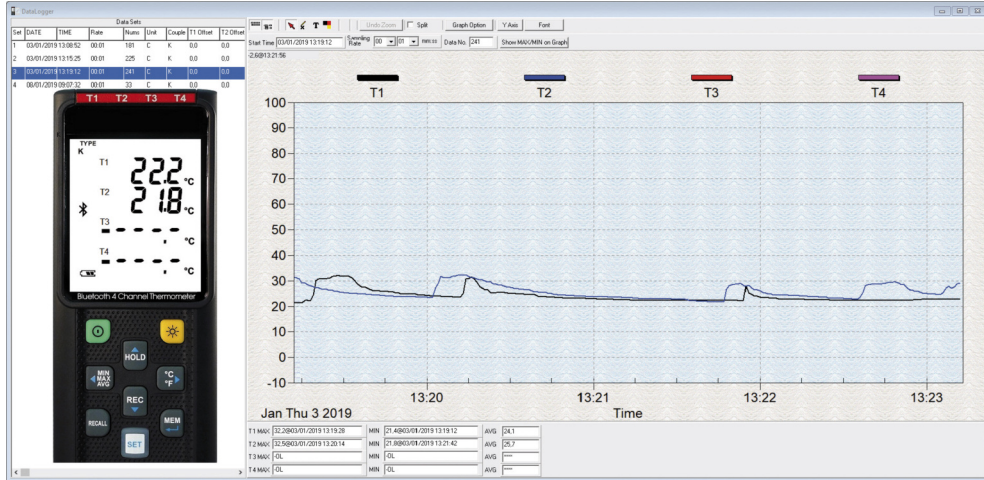


SEFRAM 9816B



Sefram

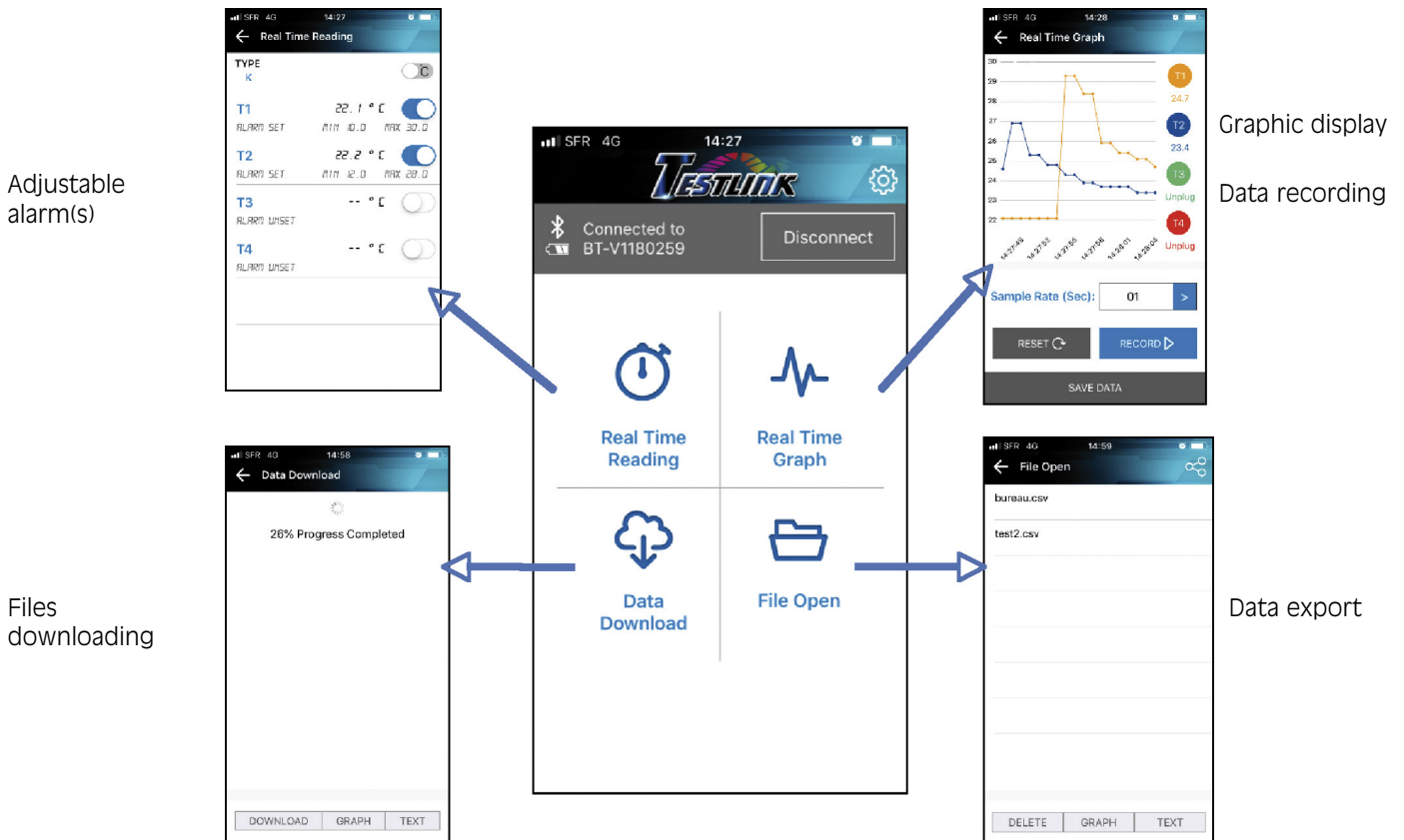
A free data processing software provided with your device



- Remote control via USB interface
- Graphic display for each channel
- Min/Max/Avg indicators for each channel
- Graphic or tabular data saves

This software enable to collect real time data via USB interface, which will preserve the batteries and the storage capacity of your device.

Bluetooth application in free download on iOS® and Android® : Testlink



| Technical specifications | | SEFRAM 9816B |
|--------------------------|--|--------------------------------------|
| Temperature range | | K: -200°C ~1372°C (- 328°F ~ 2501°F) |
| | | J: -200°C~1000°C (- 328°F ~ 1832°F) |
| | | E: -200°C~750°C (- 328°F ~ 1382°F) |
| | | T: -200°C~400°C (-328 °F ~ 752°F) |
| | | N: -200°C ~1300°C(- 328°F ~ 2372°F) |
| | | R, S: 0°C ~1767°C(32°F ~ 3212°F) |
| Resolution | Types K, J, E, T, N | |
| | | 0.1°C < 600°C / 0.1°F < 1000°F |
| | | 1°C ≥ 600°C / 1°F ≥ 1000°F |
| | Types R, S | |
| | | 0.2°C < 600°C / 0.5°F < 1000°F |
| | | 1°C ≥ 600°C / 1°F ≥ 1000°F |
| Accuracy | J-, K-, E-, T-, N- type: ±(0.1% of reading+0.7°C) ±(0.1% of reading+1.3°F) below -100 ° C ≥ -148 °F | |
| | ±(0.5% of reading +0.7°C) ±(0.5% of reading +1.3°F) | |
| | R- and S-: ± (0,2% of reading +1,4 °C) ±(0.2% of reading+2.5°F) | |
| | 0.01% of reading + 0.05°C(0.0028°F) per °C (<18°C(64°F) or >28°C(82°F)) | |
| Temperature coefficient | 0.01% of reading + 0.05°C(0.0028°F) per °C (<18°C(64°F) or >28°C(82°F)) | |
| Sample rate | 2 time per second | |
| Battery type | UM-4 or AAA 1.5V battery x 4 | |
| Battery lifetime | Bluetooth® OFF : Approx. 120 hours | |
| | Bluetooth® ON : Approx. 30 hours | |
| Operation temperature | 0°C to 50°C (32°F to 122°F) | |
| Operation humidity | 10 to 90%RH (no condensing) | |
| Storage temperature | -20°C to 60°C (-4°F to 140°F) | |
| Storage humidity | 10 to 75% HR | |
| Dimensions | 187mm (L) x 75mm (W) x 29mm (H) | |
| Weight | Approx. 290g | |
| Warranty | 1 year | |

Standard accessories : Battery 1.5V AAA x 4 pcs, Windows software, micro USB cable, K type bead probe x 2 pcs, carrying case.



FTSEFRAM9816BAN00 - Specifications can be updated without notice

