

Product Datasheet - Technical Specifications



More information in our Web-Shop at ► www.meilhaus.com

Your contact

Technical and commercial sales, price information,
quotations, demo/test equipment, consulting:

Tel.: **+49 - (0)81 41 - 52 71-0**

FAX: **+49 - (0)81 41 - 52 71-129**

E-Mail: sales@meilhaus.com

Meilhaus Electronic GmbH
Am Sonnenlicht 2
82239 Alling/Germany

Tel. **+49 - (0)81 41 - 52 71-0**
Fax **+49 - (0)81 41 - 52 71-129**
E-Mail sales@meilhaus.com

Mentioned company and product names may be registered trademarks of the respective companies. Errors and omissions excepted. © Meilhaus Electronic.

4 inputs data logger thermometer

Record to 4 simultaneous temperatures with K, J, E, T type thermocouple.

New

SEFRAM 9814 is the new data logger thermometer with 4 inputs. It's compatible with thermocouple type K, J, E and T. The tilt stand makes the measurement viewing easy when the thermometer is set down on a desk. The large LCD backlight screen enable to read the data in any environment. The fast sample rate allows to capture fast temperature changes.

SEFRAM 9814 is provided with USB interface enable to collect and process the data with provided software PC.

Application :

- Compact and easy to use
- High precision in measurement
- Alarms setup possible

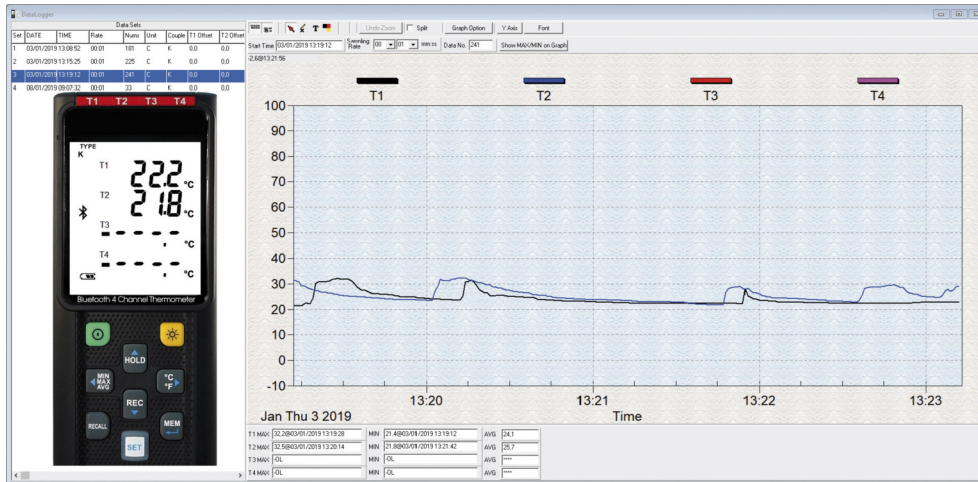
Features

- T1-T2 function
- Hold function
- Alarm function
- Adjustable auto-power off time
- Fast response time with high accuracy
- Thermocouple types K, J, E and T
- Min / Max / Avg measurements on each channel
- USB interface, PC software provided
- Large backlight LCD screen:
 - All channels displayed simultanously
- 16,000 data logger records each channel
- Recall function (to 100 instant save-readings storage)



SEFRAM 9814

A free data processing software provided with your device



- Remote control via USB interface
- Graphic display for each channel
- Min/Max/Avg indicators for each channel
- Graphic or tabular data saves

This software enable to collect real time data via USB interface, which will preserve the batteries and the storage capacity of your device.

Technical specifications

SEFRAM 9814

Temperature range	K: -200°C ~1372°C (- 328°F ~ 2501°F) J: -200°C~1000°C (- 328°F ~ 1832°F) E: -200°C~750°C (- 328°F ~ 1382°F) T: -200°C~400°C (-328 °F ~ 752°F)
Resolution	0.1°C < 600°C / 0.1°F < 1000°F, 1°C ≥ 600°C / 1°F ≥ 1000°F
Accuracy	Accuracy is specified for ambient temperatures between 18°C (64°F) and 28°C (82°F). The specifications do not include thermocouple sensor error. ±(0.1% of reading+0.7°C) ±(0.1% of reading+1.4°F) below -100°C (-148°F) ±(0.4% of reading +0.7°C) ±(0.4% of reading +1.4°F)
Temperature coefficient	0.01% of reading + 0.05°C per °C (<18°C or >28°C)
Sample rate	2 time per second
Battery type	UM-4 or AAA 1.5V battery x 4
Battery lifetime	Approx. 100 hours
Operation temperature	0°C to 50°C (32°F to 122°F)
Operation humidity	10 to 90%RH (no condensing)
Storage temperature	-20°C à 60°C (-4°F à 140°F)
Storage humidity	10 to 75%RH
Dimensions	187mm (L) x 75mm (W) x 29mm (H)
Weight	Approx. 290g
Warranty	1 year

Standard accessories : Battery 1.5V AAA x 4 pcs, Windows software, micro USB cable, K type bead probe x 2 pcs, carrying case.



FTSEFRAM9814AN00 - Specifications can be updated without notice