

## Product Datasheet - Technical Specifications



More information in our Web-Shop at ► [www.meilhaus.com](http://www.meilhaus.com)

### Your contact

Technical and commercial sales, price information,  
quotations, demo/test equipment, consulting:

Tel.: **+49 - (0)81 41 - 52 71-0**

FAX: **+49 - (0)81 41 - 52 71-129**

E-Mail: [sales@meilhaus.com](mailto:sales@meilhaus.com)

**Meilhaus Electronic GmbH**  
Am Sonnenlicht 2  
82239 Alling/Germany

Tel. **+49 - (0)81 41 - 52 71-0**  
Fax **+49 - (0)81 41 - 52 71-129**  
E-Mail [sales@meilhaus.com](mailto:sales@meilhaus.com)

Mentioned company and product names may be registered trademarks of the respective companies. Errors and omissions excepted. © Meilhaus Electronic.

**Sefram**  
Sefram

SEFRAM 9822,  
SEFRAM 9822B

## Data-logger hygro-thermometer

**Measure and record ambient humidity and temperature with inner probe, extra temperature measurement through thermocouple type K,J,E,T,N,R,S.**

SEFRAM 9822 and SEFRAM 9822B are the new data logger hygro-thermometers. They are equipped with an hygro-thermometric probe and an extra thermocouple input for type K, J, E, T, N, R and S. The tilt stand makes the measurement viewing easy when the thermometer is set down on a desk. The large LCD backlight screen enable to read the data in any environment. The fast sample rate allows to capture fast temperature changes.

SEFRAM 9822 and SEFRAM 9822B are provided with USB interface enable to collect and process the data with provided software PC. SEFRAM 9822B is further provided with Bluetooth® interface permitting to operate your device, process and view records compatible with Smartphones: iOS and Android APP available to free download from APP store.

### Application :

- Compact and easy to use
- High precision in measurement
- Alarms setup possible

### Features

- Recall function (to 100 instant save-readings storage).
- Min / Max / Avg measurement each channel.
- Large backlight LCD screen : all channels displayed simultanously
- Thermocouple type K, J, E, N, R, S
- Alarm function
- 32,000 data logger records each channel
- Adjustable auto-power off time.
- Fast response time with high accuracy
- Thermocouple type K, J, E, N, R, S
- Dew point and wet bulb measurement
- Interchangeable digital probes
- USB interface, PC software provided
- Bluetooth® interface compatible with Smartphones : iOS and Android APP available to free download from APP store. (SEFRAM 9822B)

**New**

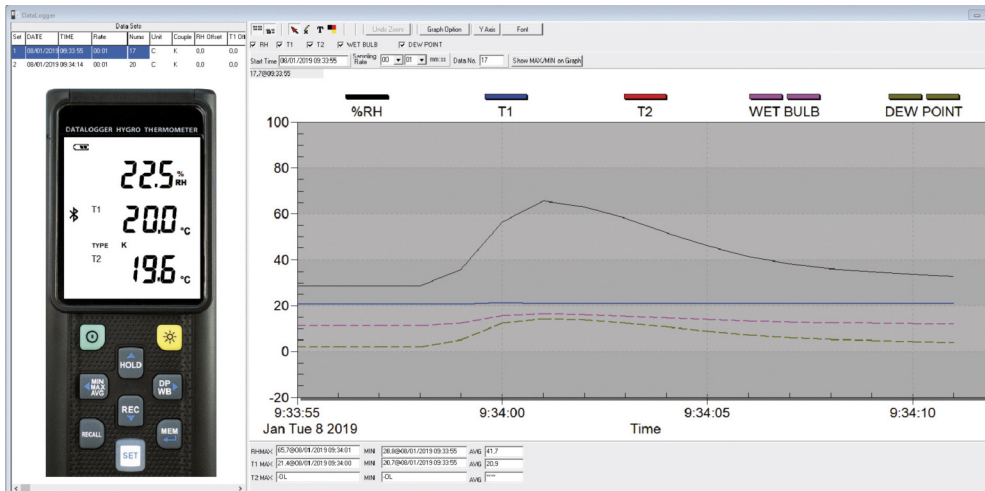


SEFRAM 9822B



**Sefram**

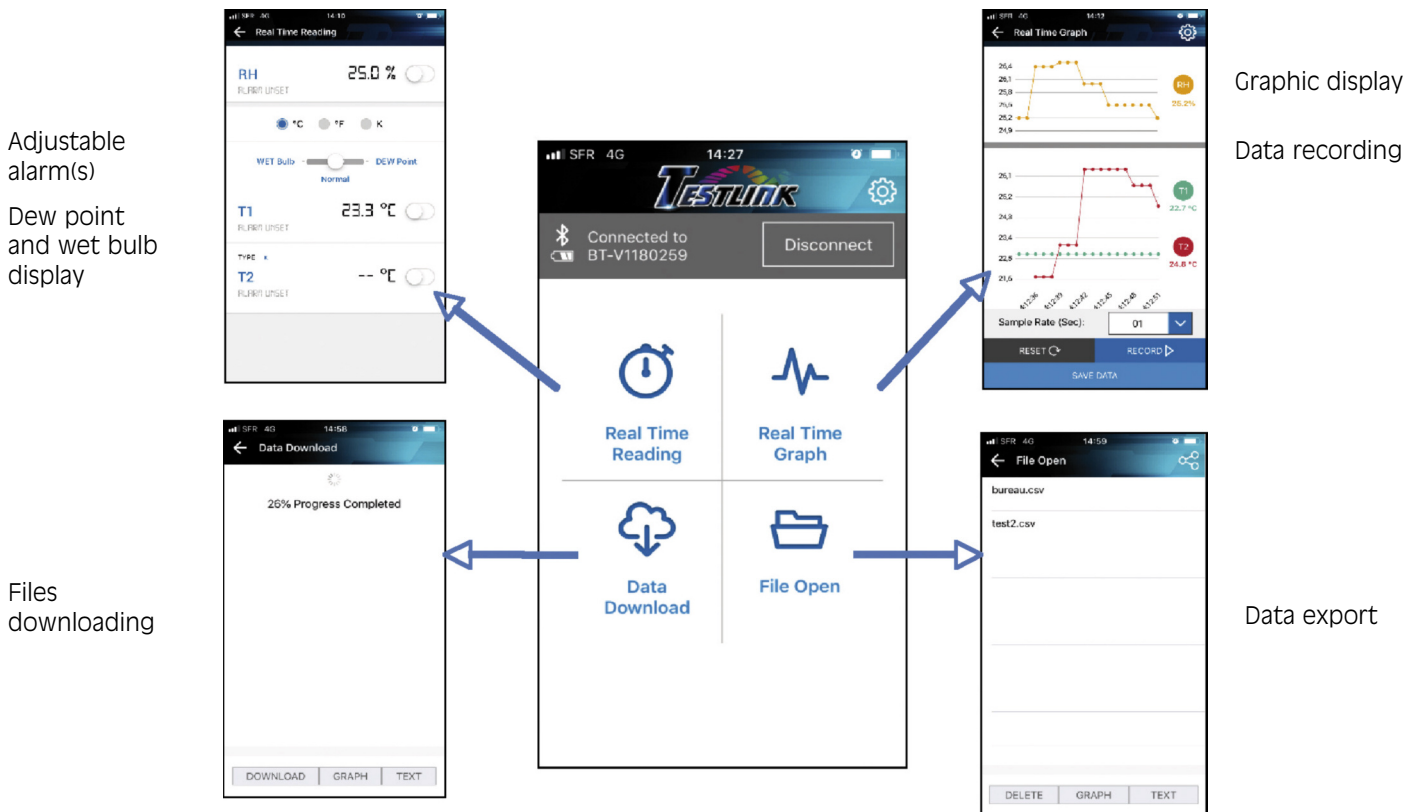
## A free data processing software provided with your device



- Remote control via USB interface
- Graphic display for each channel
- Min/Max/Avg indicators for each channel
- Graphic or tabular data saves

This software enable to collect real time data via USB interface, which will preserve the batteries and the storage capacity of your device.

## Bluetooth application to control your device : Testlink RH



Technical specifications	SEFRAM 9822	SEFRAM 9822B
<b>Humidity probe : RP-33</b>		
Sensor type	Semi-Conductor humidity and temperature sensor	
Relative humidity range	0 to 100%RH	
Temperature range	-20°C to 60°C (-4°F to 140°F) (253K to 333K)	
Dew point temperature range	-50°C to 60°C (-58°F to 140°F) (223K to 333K)	
Wet bulb temperature range	-20°C to 60°C (-4°F to 140°F) (253K to 333K)	
Résolution	0.1%RH, 0.1°C, 0.2°F, 0.1K	
Accuracy [at 23°C (73.4°F)]	10%RH à 90%RH ±2.5%RH	
	<10%RH,>90%RH ±5.0%RH	
	-20 à 60°C (-4 à 140°F) ±0.8°C (±1.5°F)	
Response time	Humidity: 60 sec. In slowly moving air Temperature (T1) : 20 sec. with slowly moving air	
Sensor hysteresis	1.5%RH with excursion of 90 % to 10 % to 90%	
Temperature coefficient	0.1 x (specified accuracy) per 1°C [ < 23°C(73.4°F) or > 23°C(73.4°F)]	
<b>Thermocouple input</b>		
Measurement range	K: -200°C ~1372°C (-328°F ~ 2501°F) (73K ~ 1645K)	
	J: -200°C~1000°C (-328°F ~ 1832°F) (73K ~ 1273K)	
	E: -200°C~750°C (-328°F ~ 1382°F) (73K ~ 1023K)	
	T: -200°C~400°C (-328 °F ~ 752°F) (73K ~ 673K)	
	N: -200°C ~1300°C(-328°F ~ 2372°F) (73K ~ 1573K)	
	R, S: 0°C ~1767°C(32°F ~ 3212°F) (273K ~ 2004K)	
Résolution	<b>K, J, E, T, N, R, S Types</b>	
	0.1°C < 600°C / 0.1°F < 1000°F / 0.1K < 873K	
	1°C ≥ 600°C / 1°F ≥ 1000°F / 1K ≥ 873K	
Accuracy	<b>K, J, E, T, N Types</b>	
	±(0.1% of reading +0.7°C) / ±(0.1% of reading +1.3°F)	
	Below -100°C (-148°F)	
	±(0.5% of reading +0.7°C) / ±(0.5% of reading +1.3°F)	
Temperature coefficient	<b>R et S Types</b>	
	±(0.2% of reading +1.4°C) / ±(0.2% of reading +2.5°F)	
Interface	USB	USB, Bluetooth®
Sample rate	2 time per second	
Alimentation	UM-4 or AAA 1.5V battery x 4	
Battery lifetime	Approx. 100 hours	Bluetooth OFF : Approx. 120 hours Bluetooth ON : Approx. 30 hours
Operation temperature	0°C to 50°C (32°F to 122°F)	
Operation humidity	10 to 90%RH (no condensing)	
Storage temperature	-20°C to 60°C (-4°F to 140°F)	
Storage humidity	10 to 75%RH	
Dimensions	187 x 75 x 29 mm	
Dimensions sonde RP-33	16mm Diameter x 98mm (L)	
Weight	Approx 330g	
Warranty	1 year	

**Standard Accessories for Sefram 9822 :** Battery 1.5V AAA x 4 pcs, Windows software, micro USB cable, K type bead probe, carrying case.

**Standard Accessories for Sefram 9822B :** Battery 1.5V AAA x 4 pcs, Windows software, micro USB cable, K type bead probe, carrying case, Bluetooth® adaptater.