

Product Datasheet - Technical Specifications



More information in our Web-Shop at ► www.meilhaus.com

Your contact

Technical and commercial sales, price information,
quotations, demo/test equipment, consulting:

Tel.: **+49 - (0)81 41 - 52 71-0**

FAX: **+49 - (0)81 41 - 52 71-129**

E-Mail: sales@meilhaus.com

Meilhaus Electronic GmbH
Am Sonnenlicht 2
82239 Alling/Germany

Tel. **+49 - (0)81 41 - 52 71-0**
Fax **+49 - (0)81 41 - 52 71-129**
E-Mail sales@meilhaus.com

Mentioned company and product names may be registered trademarks of the respective companies. Errors and omissions excepted. © Meilhaus Electronic.

Sefram

SEFRAM LOG 1601

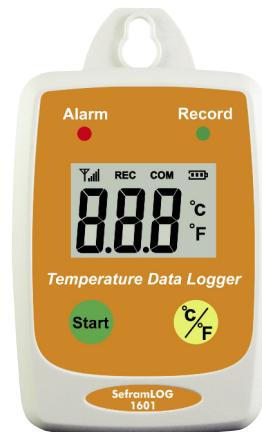
Temperature datalogger

A simple and convenient solution for temperature monitoring with LCD display

Capabilities

- Temperature range -40°C to +85°C
- Large LCD display
- Memory: up to 50.000 records
- USB interface for downloading records
- PC application software supplied
- Programmable alarms (Hi, Lo)
- IP65 protection (waterproof)
- Simple and easy-to-use
- Built-in hanging system

NEW



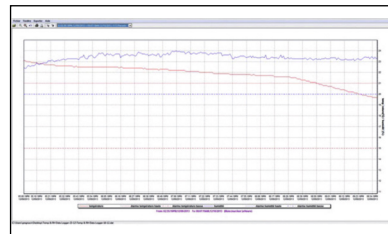
SEFRAMLOG 1601 specifications

Temperature range	-40°C to +85°C
Resolution	0,1°C
Accuracy	±0,6°C from -20°C to +50°C ±1,0°C from -40°C to -20,1°C and from +50,1°C to +85°C
Measurement rate	5s, 10s, 30s, 1mn, 5mn, 10min, 30min, 1h, 2h
Display	LCD, 3 digits with units and symbols
Power supply	3.6V lithium (1/2 AA installed) or 5V DC external supply
Autonomy	1 year typical
Interface	USB
Alarms	Hi and Lo, programmable by PC software, red blinking LED on front panel
Operating temperature	-40°C to +85°C, RH < 95%
Storage temperature	-40°C to +85°C
Dimensions	83 x 60 x24 mm
Weight	77g
Warranty	1 year

Main functions of the PC software :

- Setup of SEFRAMLOG 1601
- Download of records, erase records
- Display of records, with zoom and cursors
- Export of data to Excel™
- Graph and data printing

Supplied with : battery (installed), PC software (downloadable), USB cable, manual.




FTSEFRAMLOG1601A 00 - Specifications can be updated without notice

Sefram

