

Product Datasheet - Technical Specifications



More information in our Web-Shop at ► www.meilhaus.com

Your contact

Technical and commercial sales, price information,
quotations, demo/test equipment, consulting:

Tel.: **+49 - (0)81 41 - 52 71-0**

FAX: **+49 - (0)81 41 - 52 71-129**

E-Mail: sales@meilhaus.com

Meilhaus Electronic GmbH
Am Sonnenlicht 2
82239 Alling/Germany

Tel. **+49 - (0)81 41 - 52 71-0**
Fax **+49 - (0)81 41 - 52 71-129**
E-Mail sales@meilhaus.com

Mentioned company and product names may be registered trademarks of the respective companies. Errors and omissions excepted. © Meilhaus Electronic.

Sefram

SEFRAMLOG 1620

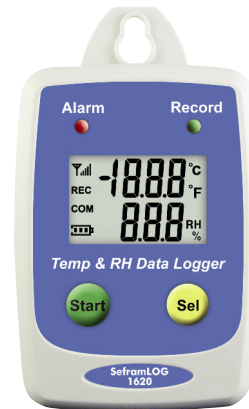
Temperature and humidity datalogger

A simple and convenient solution for temperature and humidity monitoring with LCD display

Capabilities

- Temperature range -40°C to +85°C
- Humidity range from 1% to 99%
- Dual LCD screen
- Memory: up to 50.000 records
- USB interface for downloading records
- PC application software supplied
- Programmable alarms (HI, Lo)
- IP65 protection (waterproof)
- Simple and easy-to-use
- Built-in hanging system

NEW



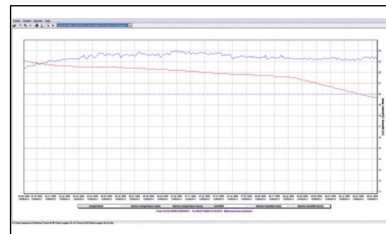
SEFRAMLOG 1620 specifications

| | |
|---|--|
| Temperature measurement | |
| Range | -40°C to +85°C |
| Resolution | 0,1°C |
| Accuracy | ±0,6°C from -20°C to +50°C ±1,0°C from -40°C to -20,1°C and from +50,1°C to +85°C |
| Humidity measurement (capacitive sensor) | |
| Range | 1% to 99%, non-condensing |
| Resolution | 0,1% |
| Accuracy | ±3% from 20% to 80% ±5% from 1% to 19,9% and from 80,1% to 99,0% |
| General specifications | |
| Measurement rate | 5s, 10s, 30s, 1mn, 5mn, 10min, 30min, 1h, 2h |
| Display | LCD, 3 digits with units and symbols |
| Power supply | 3.6V lithium (1/2 AA installed) or 5V DC external supply |
| Autonomy | 1 year typical |
| Interface | USB |
| Alarms | Hi and Lo, programmable by PC software, red blinking LED on front panel |
| Operating temperature | -40°C to +85°C, RH < 95% |
| Storage temperature | -40°C to +85°C |
| Dimensions | 83 x 60 x24 mm |
| Weight | 77g |
| Warranty | 1 year |

Main functions of the PC software :

- Setup of SEFRAMLOG 1620
- Download of records, erase records
- Display of records, with zoom and cursors
- Export of data to Excel™
- Graph and data printing

Supplied with : battery (installed), PC software (downloadable), USB cable, manual.




FTSEFRAMLOG1620A 00 - Specifications can be updated without notice

Sefram



1997/7001