

## Product Datasheet - Technical Specifications



More information in our Web-Shop at ► [www.meilhaus.com](http://www.meilhaus.com) and in our download section.

### Your contact

Technical and commercial sales, price information,  
quotations, demo/test equipment, consulting:

Tel.: **+49 - 81 41 - 52 71-0**

FAX: **+49 - 81 41 - 52 71-129**

E-Mail: [sales@meilhaus.com](mailto:sales@meilhaus.com)

Downloads:

[www.meilhaus.com/en/infos/download.htm](http://www.meilhaus.com/en/infos/download.htm)

Meilhaus Electronic GmbH  
Am Sonnenlicht 2  
82239 Alling/Germany

Tel. **+49 - 81 41 - 52 71-0**  
Fax **+49 - 81 41 - 52 71-129**  
E-Mail [sales@meilhaus.com](mailto:sales@meilhaus.com)

Mentioned company and product names may be registered trademarks of the respective companies. Prices in Euro plus VAT. Errors and omissions excepted.  
© Meilhaus Electronic.

[www.meilhaus.de](http://www.meilhaus.de)

# SPD1000X Series Programmable DC Power Supply



Data Sheet-2018.07

# SPD1168X SPD1305X

## Product Overview

SPD1000X Programmable Linear DC Power Supply has a 2.8 inch TFT-LCD display, features remote computer control capability, and real time wave display, to deliver high performance and ease-of-use.

The SPD1168X features a high precision programmable output capable of delivering up to 16 V, the SPD1305X features a high precision programmable output capable of delivering up to 30 V and also includes a 4-wire sense function for more accurate voltage sourcing, especially for long leads or high resistance connections. There are additional output short and overload protect functions to assist in production and development applications.

## Main Features

- ✓ Single path high-precision programmable voltage output:
  - SPD1168X: 16 V/8 A, total power up to 128 W
  - SPD1305X: 30 V/5 A, total power up to 150 W
- ✓ Stable, reliable, Low ripple and noise:  $\leq 350 \mu\text{Vrms}/3 \text{ mVpp}$ ;  $< 2 \text{ mArms}$
- ✓ Fast transient response time:  $< 50 \mu\text{s}$
- ✓ 5 digit Voltage, 4 digit Current Display, Minimum Resolution: 1 mV/1 mA
- ✓ Supports front panel timing output functions
- ✓ 2.8 inch true color TFT- LCD 240 \*320 display
- ✓ 2 types of output modes: Two-wire output mode, 4-wire compensation output mode, Maximum compensation voltage 1V.
- ✓ 100/120/220/230 V compatible design to meet the needs of different power grids
- ✓ Intelligent temperature-controlled fan reduces noise
- ✓ Clear graphical interface, with the waveform display function
- ✓ Internal 5 groups of system parameter save/recall
- ✓ Includes PC software: Easypower, supports SCPI, LabView driver



## Design Features

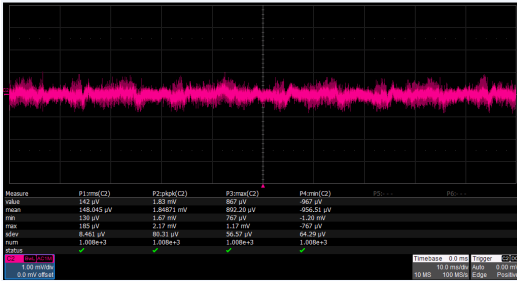
### High-resolution and high-precision output

The SPD1000X power supply features a high measurement resolution of 1mV/1mA. This ensures accurate output even with very small changes in voltage or current. This is impossible for a low resolution power supply.

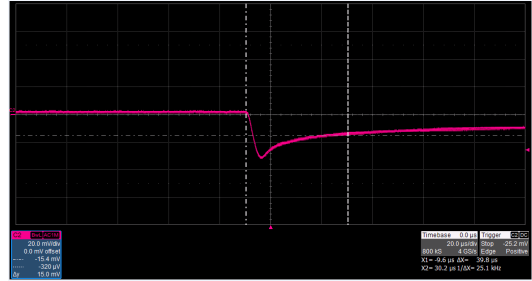
### 4-wire SENSE compensation mode function

In the 4-wire SENSE compensation output mode: By using a separate measurement circuit, the supply can more accurately compensate for any voltage drops due to high resistance connections or long cables. Maximum compensation voltage is 1V.

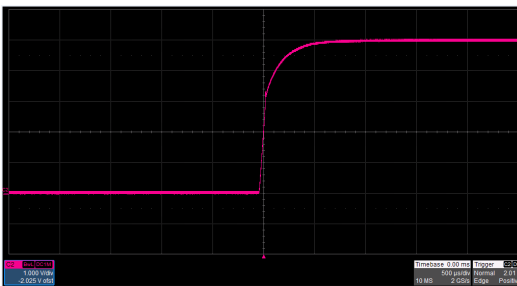
### Low ripple and noise



### Fast transient response time



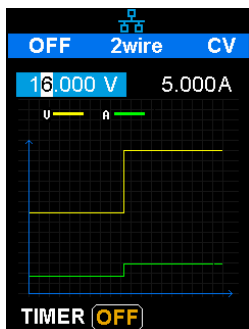
### Low voltage overshoot



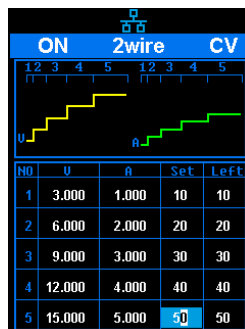
### 0.01% Load Regulation & 0.2% Line Regulation



### Panel displays the timing output



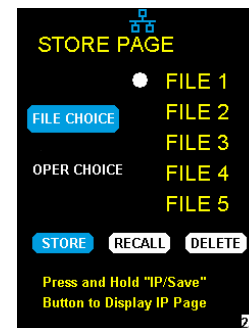
Panel timing output



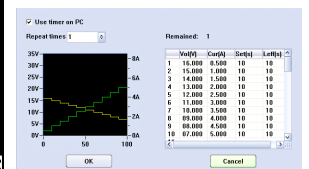
Real time wave display

### Save/Recall setting parameters

SPD1000X programmable power supply can save or recall 5 groups of setting parameters in internal storage. You can easily recall the settings you need.



Internal Storage



PC Timer



## Specifications

All the specifications are guaranteed when the instrument has been working for more than 30 minutes under the specified operating temperature. Unless otherwise noted, the specifications are applicable to all the channels of the specified model.

Model		SPD1168X	SPD1305X
DC Output (0 °C to 40 °C )		Output Voltage: 0 to 16 V Output Current: 0 to 8 A	Output Voltage: 0 to 30 V Output Current: 0 to 5 A
Max Output Power		128W	150W
Display		2.8 inch true color TFT-LCD 5 digit voltage/4 digit current	
Resolution		1mV/1mA	
Program Accuracy (25 ± 5 °C )		Voltage: ±(0.03% of reading+10 mV)	
		Current: ±(0.3% of reading+10 mA)	
Readback Accuracy (25 ± 5 °C )		Voltage: ±(0.03% of reading+10 mV)	
		Current: ±(0.3% of reading+10 mA)	
Temperature Coefficient per °C (Output Percentage + Offset)		Voltage: ±(0.01% of reading+3 mV)	
		Current: ±(0.01% of reading+3 mA)	
Constant Voltage Mode	Load Regulation	≤ 0.01% + 2 mV	
	Ripple & Noise	≤ 350 uVrms/3 mVpp (20 Hz to 20 MHz)	
	Recovery Time	< 50 μs (50% load change, minimum load 0.5 A)	
Constant Current Mode	Line Regulation	≤ 0.2% + 3 mA	
	Load Regulation	≤ 0.2% + 3 mA	
	Ripple & Noise	≤ 2 mArms	
Locking Key		Yes	
Memory Save/Recall		5 Sets	
Power Source		AC 100 /120/220/230 V ± 10% 50/60Hz	
Standard Configuration Interface		USB Device, LAN	
Insulation		Case to Terminal ≥ 20 MΩ (DC 500 V) Case to AC line ≥ 30 MΩ (DC 500 V)	
Operating Environment		Outdoor Usage: Elevation: ≤2000 m Environment Temperature 0 to 40 °C Relative Humidity ≤ 80% Installation Level: II Pollution Level: 2	
Storage Environment		Environment Temperature: -10 to 70 °C Relative Humidity ≤ 70%	
Dimension		154.6 (W) × 144.5 (H) × 280(D) mm	
Weight		≈5.5kg	

## Ordering information

Product information	Product No
Single path independent output, min resolution 1 mV/1 mA, USB Device & LAN, 2.8 inch LCD display	SPD1168X, SPD1305X
Standard Accessories	
USB Cable -1	
Quick Start -1	
Power cord -1	
Output Test Cord -2 Sets	

## Warranty

Three-year warranty, excluding accessories.