

Product Datasheet - Technical Specifications



More information in our Web-Shop at ► www.meilhaus.com and in our download section.

Your contact

Technical and commercial sales, price information,
quotations, demo/test equipment, consulting:

Tel.: **+49 - 81 41 - 52 71-0**

FAX: **+49 - 81 41 - 52 71-129**

E-Mail: sales@meilhaus.com

Downloads:

www.meilhaus.com/en/infos/download.htm

Meilhaus Electronic GmbH
Am Sonnenlicht 2
82239 Alling/Germany

Tel.	+49 - 81 41 - 52 71-0
Fax	+49 - 81 41 - 52 71-129
E-Mail	sales@meilhaus.com

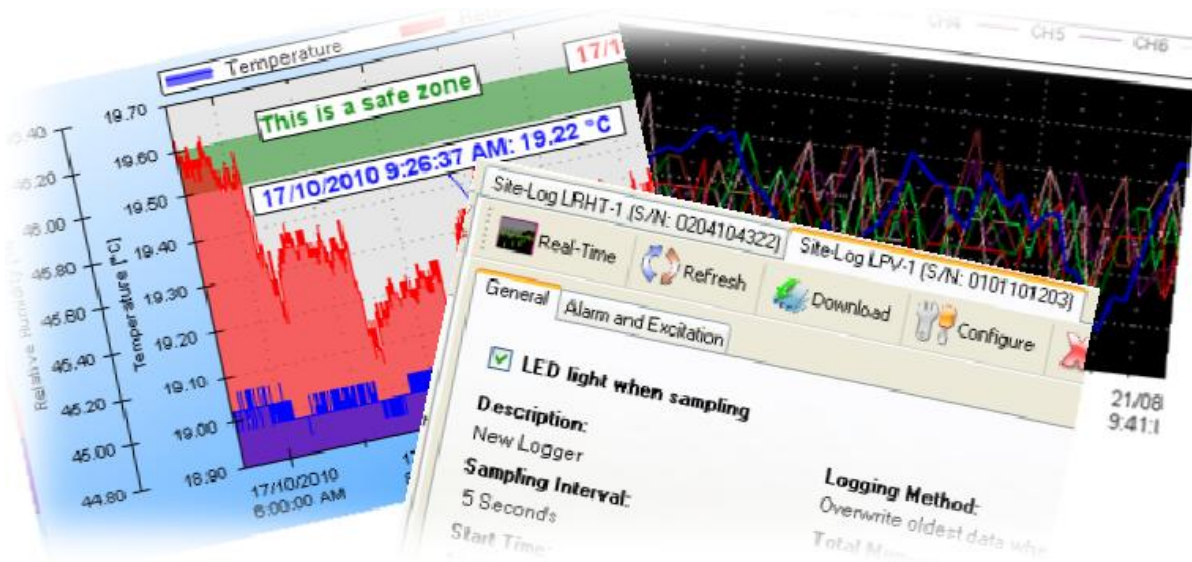
Mentioned company and product names may be registered trademarks of the respective companies. Prices in Euro plus VAT. Errors and omissions excepted.
© Meilhaus Electronic.

www.meilhaus.de



SiteView Software Development Kit

Product Specifications



OVERVIEW

SiteView Software Development Kit (SDK) is a .NET assembly (dll) used as a software driver/library of Site-Log series data loggers. A customer's Windows application can invoke SDK's functions to communicate with Site-Log data loggers for configuring a new session, retrieving status and downloading data etc.

SiteView SDK includes all general functionalities to fulfill your data logging related tasks. It handles the complexity behind the scene, leaving the customer's application neat and clean.

SiteView SDK is compatible with Windows XP, Vista, Windows 7.

FEATURES

Multiple Communications Interfaces:

SiteView SDK supports USB, USB Device Server, Serial Port and Serial Port Device Server connections for easy local and remote access of the data logger.

Communications with a data logger becomes as easy as few lines of code:

```

cUSB Conn = new cUSB();
List<cDataLogger> Loggers = Conn.FindDataLoggers();

if (Loggers.Count > 0)
    MessageBox.Show(string.Format("Total data loggers found in USB ports: {0}",
Loggers.Count));

```

Easy Device Level Functions:

SiteView SDK provides necessary functionalities in both logger and channel level. Retrieving and Configuring device properties become easy and simple:

```

cUSB Conn = new cUSB();
List<cDataLogger> Loggers = Conn.FindDataLoggers();
if (Loggers.Count > 0)
{
    if(Loggers[0].UpdateStatus())
    {
        MessageBox.Show("The logger status is updated.");
        labelLoggerID.Text = Loggers[0].LoggerID;
        labelDesc.Text = Loggers[0].Description;
        TimeSpan interval = new TimeSpan(Logger.SamplingInterval * TimeSpan.TicksPerMillisecond);
        labelInterval.Text = interval.ToString();
        labelReadings.Text = Loggers[0].TotalReadings.ToString();
        labelStartTime.Text = Loggers[0].DataStartTime.ToString();
        labelDataEnd.Text = Loggers[0].DataEndTime.ToString();
    }
}

```

Ease Tools for Configuration:

SiteView SDK provides easy to use configuration user interfaces for editing unit, equation and plot properties:

```

cSiteViewSDKSettings.DisplayEquationEditor(this);
cSiteViewSDKSettings.DisplayUnitEditor(this);

```

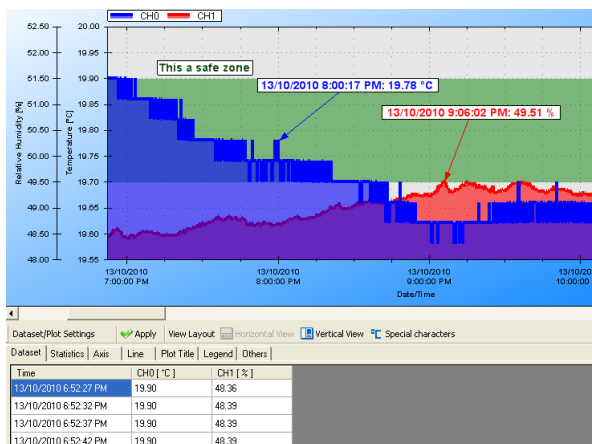
Graph Control:

SiteView SDK provides a graphic control for plotting downloaded data that can be embedded in other program's user interface.

```

openFileDialog1.Filter = "svf|*.svf";
if (openFileDialog1.ShowDialog(this) == DialogResult.OK)
{
    siteViewPlotCtrl1.OpenFile(openFileDialog1.FileNames);
}

```

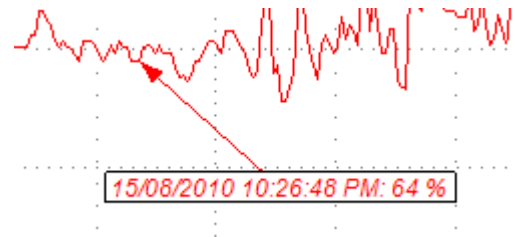


Actions On Plot:

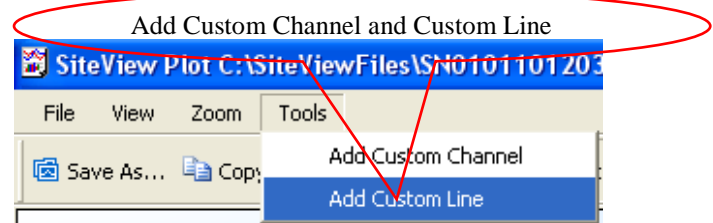
Zooming in /zooming out function provides detailed view of the data.



Insertion of annotations and labels highlights the important data points and sections.



Custom Channels and Custom Lines allow adding as many additional curves as possible.



SPECIFICATIONS

Product Identification	
Product Name	SiteView SDK
Model	SSDK-1
System Requirements	
Computer	CPU: 1.0 GH or above Memory: 256K or above Port: 1 USB port or 1 COM port (SL-RS232 required) Hard Drive: 1GB or above
Operating System	Window XP, Window Vista, Window 7
Communications	
Supported Interfaces	USB, Serial Port, Ethernet (USB Device Server, Serial Port Device Server)
Baud Rate	Auto-detected baud rate from 2400 to 115200 bps
Logger Interactions	
Status	Retrieve status of the connected logger
Configuration	Configure logger for new recording session
Plotting	
Views	Tabula, plot, statistics
Configuration	Configure axis, lines, view properties
Zoom	Zoom in/zoom out, scale zoom, box zoom, time-span zoom
Labels & Annotations	Add, edit, delete graph labels and line annotations
Custom Line	Add, edit, delete the custom line.
Custom Channel	Add, edit, delete the custom channel.
Measurement Conversion	
Custom Equation	Add, edit, delete the custom equation.
Custom Line Equation	Add, edit, delete the custom-line equation.
Unit	Add, edit, remove unit categories and units.
Data Importing/Exporting	
SiteView File	Load single or multiple SiteView files into one viewport. Export plot to images: Emf, PNG, Gif, Jpeg, Tiff and Bmp file format. Export plot to text: csv, txt. Save multiple SiteView files to single SiteView file. Print plot, tabular data, statistics.
Equations & Units	Import, Export Equation files and Unit files.
Help	
Help File	Portable Document Format(.PDF), Microsoft Compiled HTML Help(.CHM)