

Product Datasheet - Technical Specifications



More information in our Web-Shop at ► www.meilhaus.com and in our download section.

Your contact

**Technical and commercial sales, price information,
quotations, demo/test equipment, consulting:**

Tel.: **+49 - 81 41 - 52 71-0**

FAX: **+49 - 81 41 - 52 71-129**

E-Mail: sales@meilhaus.com

Downloads:

www.meilhaus.com/en/infos/download.htm

Meilhaus Electronic GmbH | Tel. **+49 - 81 41 - 52 71-0**
Am Sonnenlicht 2 | Fax **+49 - 81 41 - 52 71-129**
82239 Alling/Germany | E-Mail sales@meilhaus.com

Mentioned company and product names may be registered trademarks of the respective companies. Prices in Euro plus VAT. Errors and omissions excepted.
© Meilhaus Electronic.

www.meilhaus.de

SITEVIEW – WIN. Software

Product specifications



OVERVIEW

The SiteView is a Microsoft Windows based application that works with all data loggers manufactured by Microedge Instruments Inc. It allows customers to configure and download the logger, plot the downloaded data and view the real-time data in the logger.

Its user-friendly graphic interface plus powerful functionalities fit both novice and advanced users.

The versatility of the custom equation and custom-line equation handle complicated measurement requirements.

Scheduled Download Manager and Database Explorer make both downloading and viewing of data easy.

DETAILS OF FEATURES:

❖ Multiple Communication Interfaces:

SiteView supports USB, USB Device Server, Serial Port and Serial Device Server connections for easy local and remote access of the data logger.



❖ Download Multiple Loggers:

SiteView allows downloading of multiple data loggers simultaneously.

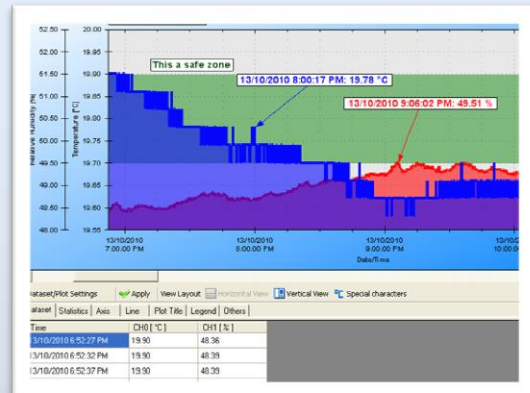
❖ Powerful Custom Equations:

SiteView provides powerful custom equation functionality which solves scientific and laboratory algorithm difficulties.

```
//A custom equation. Do not change equation name. Equation must return a value.
public double CO_200PPM(double Input)
{
    //add your code here
    double output;
    output = (200 - 0) * (Input - 0.004) / (0.02 - 0.004) + 0;
    return output;
}
```

❖ Multiple Data Views:

SiteView displays both the tabular data view and the plot view.



FEATURES (CONTS):

❖ Ease of Use:

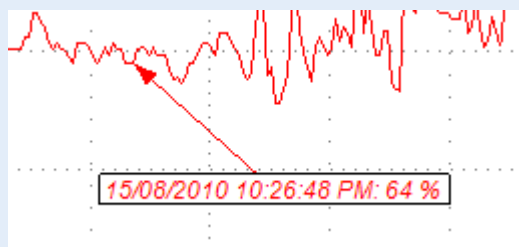
SiteView's user-friendly interface makes it much easier to view the logger's properties, download data and configure the logger for a new session.

❖ Actions On Plot:

Zooming in /zooming out function provides detailed view of the data and sections:



Annotations and labels highlight the important data points:



❖ Real-Time View of Data Logger:

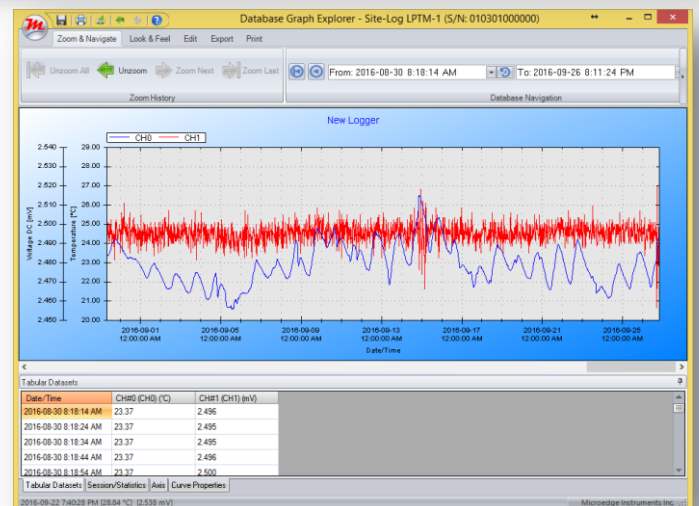
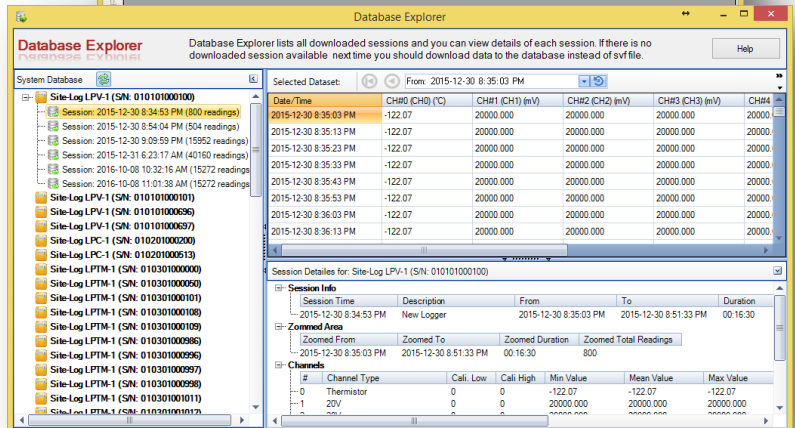
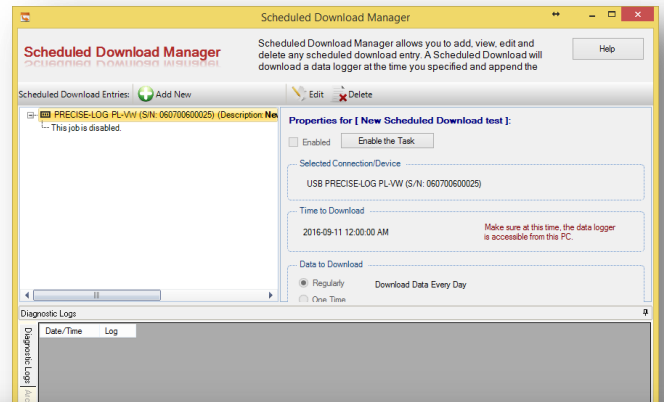
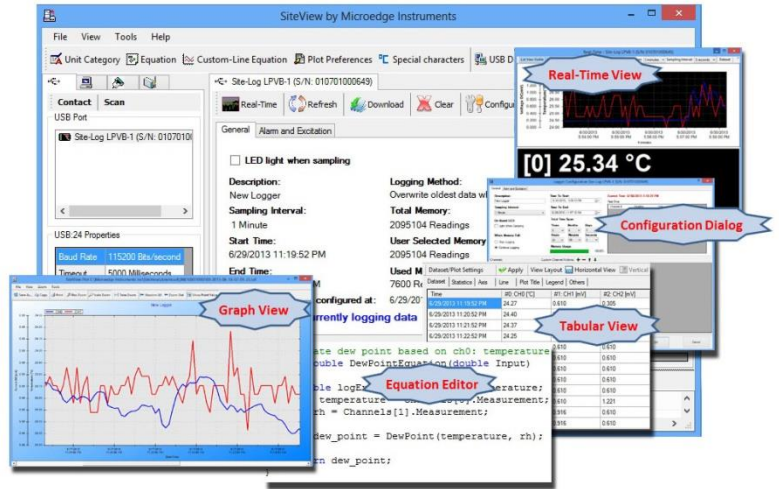
SiteView allows real-time chart and list views of the data logger, replacing the paper chart recorder.

❖ Schedule Download Data:

You can schedule a download of a logger once or regularly (hourly, daily, weekly etc.). The data will be appended to the database.

❖ Browse Data in Database:

With Database Explorer, you can browse and graph the data easily.



SPECIFICATIONS

Product Identification	
Product Name	SiteView
Model	SSV-1
System Requirements	
Computer	CPU: 1.0 GH or above Memory: 256K or above Port: 1 USB port or 1 COM port (SL-RS232 required) Hard Drive: 1GB or above
Operating System	Window XP, Window Vista, Window 7, 8 10
Communications	
Supported Interfaces	USB, Serial Port, Ethernet (USB Device Server, Serial Device Server)
Baud Rate	Auto-detected baud rate from 2400 to 115200 bps
Logger Interactions	
Status View	View status of the connected logger
Configuration	Configure logger for new recording session
Real-Time View	Monitor logger in real-time list view and chart view; real-time data can be saved to time stamped text files.
Scheduled Download	Schedule a time to automatically download data hourly, daily, weekly, monthly.
Download Data	Data can be saved in SVF file or the system's database.
Plotting	
Views	Tabula, plot, statistics
Configuration	Configure axis, lines, view properties
Zoom	Zoom in/zoom out, scale zoom, box zoom, time-span zoom
Labels & Annotations	Add, edit, delete graph labels and line annotations
Custom Line	Add, edit, delete the custom line.
Custom Channel	Add, edit, delete the custom channel.
Measurement Conversion	
Custom Equation	Add, edit, delete the custom equation.
Custom Line Equation	Add, edit, delete the custom-line equation.
Unit	Add, edit, remove unit categories and units.
Data Importing/Exporting	
SiteView File	Load single or multiple SiteView files into one viewport. Export plot to images: Emf, PNG, Gif, Jpeg, Tiff and Bmp file format. Export plot to text: csv, txt. Save multiple SiteView files to single SiteView file. Print plot, tabular data, statistics.
Equations & Units	Import, Export Equation files and Unit files.
Help	
Interactive Help	Related help topic is displayed with hot key (F1).
Help File	Portable Document Format(.PDF), Microsoft Compiled HTML Help(.CHM)