

Product Datasheet - Technical Specifications



More information in our Web-Shop at ► www.meilhaus.com

Your contact

Technical and commercial sales, price information,
quotations, demo/test equipment, consulting:

Tel.: +49 - (0)81 41 - 52 71-0

E-Mail: sales@meilhaus.com

Meilhaus Electronic GmbH
Am Sonnenlicht 2
82239 Alling/Germany

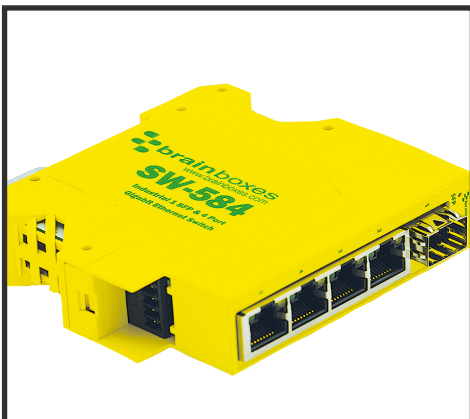
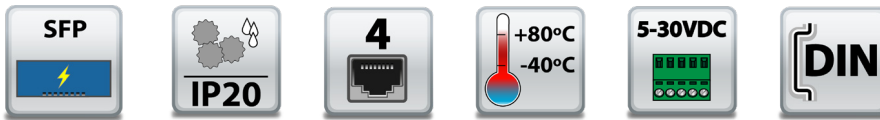
Tel. +49 - (0)81 41 - 52 71-0 E-
Mail sales@meilhaus.com

Mentioned company and product names may be registered trademarks of the respective companies. Errors and omissions excepted. © Meilhaus Electronic.

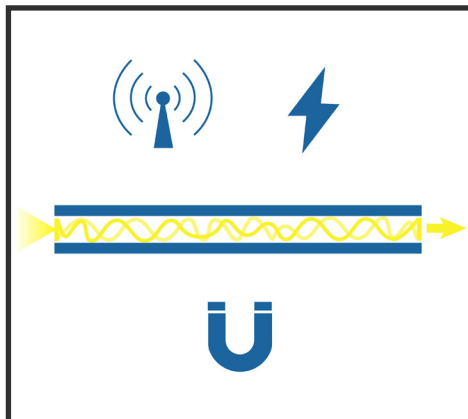
SW-584

INDUSTRIAL 1 SFP & 4 PORT GIGABIT ETHERNET SWITCH (SFP module not included)

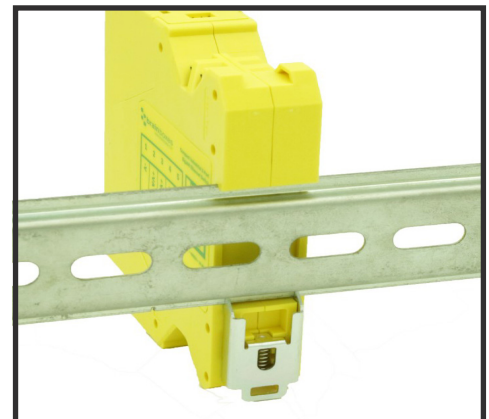
- Fast, low cost, future-proof way to deploy long network segments
- Connect to wide variety of fibre optic and copper cable types
- High speed data connection over extended distances
- Reduce susceptibility to electromagnetic interference
- Industrial temperature range: -40°C to +80°C / -40°F to +176°F - works in extreme conditions
- Jumbo Frame support up to 9K frames
- Integral DIN mount
- SFP Port Power Overcurrent protection



Long link lengths: expand Ethernet network beyond 100m and completely eliminate Ground loops



Fibre cables are immune to any electrical/magnetic interference, and require no cumbersome isolation devices to guard against high EMI/RFI or lightning strikes



Integral DIN mount and slim design takes up minimal cabinet space

SW-584

INDUSTRIAL 1 SFP & 4 PORT GIGABIT ETHERNET SWITCH

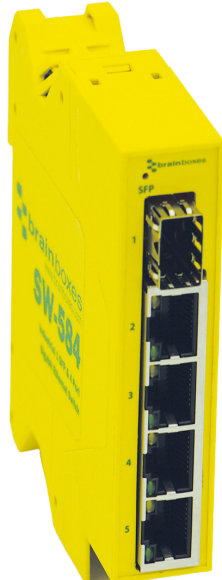
Jumbo Frame support up to 9k frames

All Ethernet ports are Auto MDI/MDIX supporting straight through or crossover Ethernet cables

Integral DIN mount with ground

Automatic detection of data transmission speed: 10 or 100 or 1000 Mbps

SFP Power Current Overprotection



-40°C to +80°C/-40°F to +176°F temperature range

Non-conducting polyamide case

Compact case - all round small profile

Power consumption is optimised based on the status of the link device

Dual redundant power input: +5VDC to +30VDC

Easy Wire Removable screw terminal block

Connectors

Screw Terminals	3.5mm pitch, #22 - #14, 0.5mm ² -2.5mm ² pin power supply
Wire Thickness	0.150 inch, 3.81mm, 20 pins, 12+8 screw terminals, #26 - #16 AWG, 0.14mm ² -1.3mm ²

Power Supply

Power Consumption	4.2 W
Power Supply input	Unregulated +5V to +30Volts DC, reverse polarity protection
Isolation	1500VRMS Magnetic Isolation from Twisted Pair Ethernet

Environmental

Operating Temperature	-40°C to +80°C/-40°F to +176°F
Storage Temperature	-40°C to +80°C/-40°F to +176°F
Ambient Relative Humidity	5 to 95% (non-condensing)

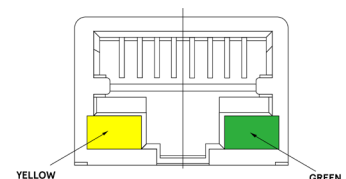
SFP/POWER LED:

Power on: Green
SFP plugged in: Amber
SFP activity: Amber Flashing
SFP Error/Incompatible: Green/Amber Flashing

Magjack LEDs:

Connection established
Data communication

Speed
1000Mbps
100Mbps

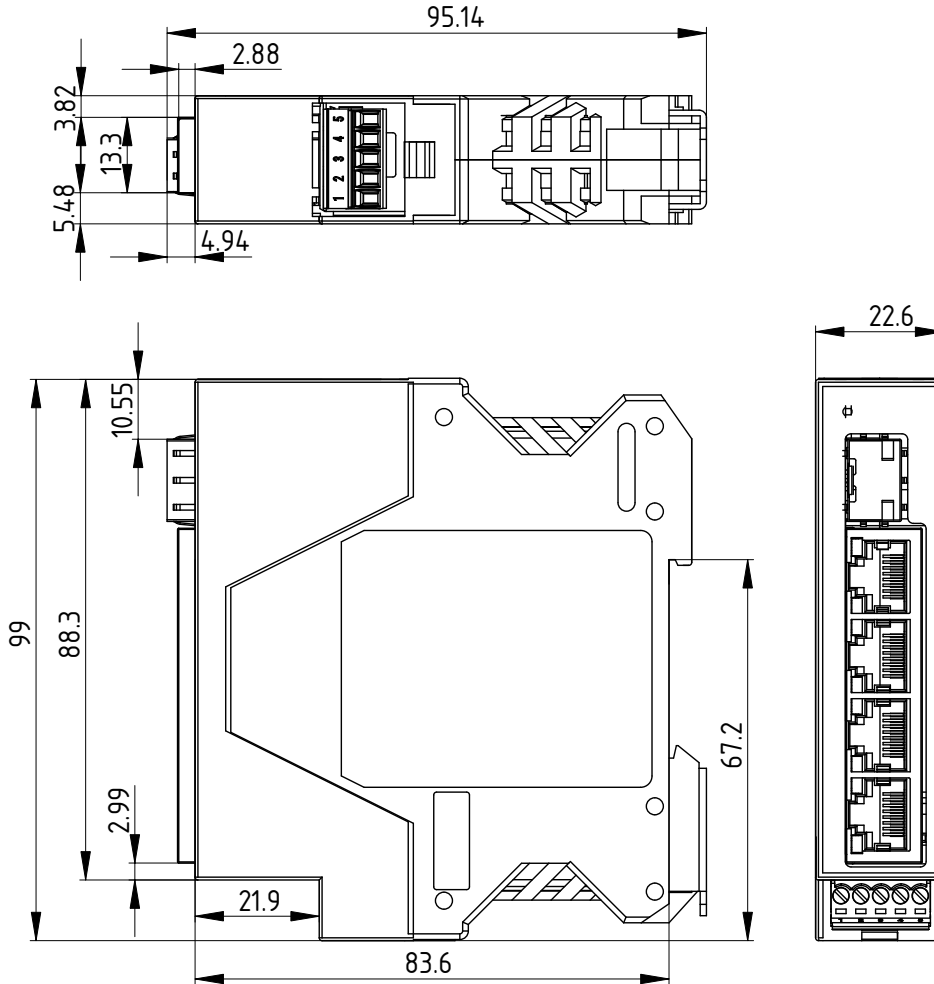


Ethernet

Ethernet Port	4 x RJ45 jack, 10/100/1000Mbps autosensing, crossover auto sensing (Auto MDIX) 1 x SFP 1000BASE-X Port
---------------	---

Protection 1,500 Volts magnetic isolation between ports

Housing IP-20 rated non-conducting polyamide case



Power Terminal Pin Outs

PIN	FUNCTION
1	-V
2	+VA
3	+VB
4	-V
5	Functional Earth

Ethernet Ports x4 Pin Outs

PIN	FUNCTION
1	TxRxA+
2	TxRxA-
3	TxRxB+
4	TxRxC+
5	TxRxC-
6	TxRxB-
7	TxRxD+
8	TxRxD-

Lifetime Warranty and Support:

We can help with every aspect of your project, from getting you up and running to custom application.

SW-584

INDUSTRIAL 1 SFP & 4 PORT GIGABIT ETHERNET SWITCH

Packaging Information

Packaging	Quick Start Guide
Device	Ethernet Switch 5 port
Packaged Weight	0.2045kg, 0.45lbs
Packaged Dims	160x135x49 mm, 6.3x5.3x1.9 inches
GTIN Universal Code	837324005004

Approvals

Industry Approvals	Microsoft Certified Gold Partner, WEEE, RoHS, AEO (C-TPAT), CE, UKCA, METL Complies with UL62368-1
--------------------	--

Product Support

Warranty	Lifetime - online registration required
Support	Lifetime web, email and phone support from fully qualified, friendly staff who work in and alongside the Product Development Team

Additional Information

OEM option	Available for bulk buy OEM
Made In	Manufactured in Great Britain (GB) by Brainboxes - Winner 2005 European Electronics Industry Awards 'Manufacturer of the Year'



PW-600
Power supply with connectors for UK, USA, EU and AUS mains socket. 'Tails' are suitable for connecting to screw terminal blocks.



PW-650
Power supply with USB connector and prewired screw terminal block. Suitable for use with 5V USB ports.



SW Range
Switch products available in a range of formats and specifications.