

## Product Datasheet - Technical Specifications



More information in our Web-Shop at ► [www.meilhaus.com](http://www.meilhaus.com) and in our download section.

### Your contact

Technical and commercial sales, price information,  
quotations, demo/test equipment, consulting:

Tel.: **+49 - 81 41 - 52 71-0**

FAX: **+49 - 81 41 - 52 71-129**

E-Mail: [sales@meilhaus.com](mailto:sales@meilhaus.com)

Downloads:

[www.meilhaus.com/en/infos/download.htm](http://www.meilhaus.com/en/infos/download.htm)

**Meilhaus Electronic GmbH** | Tel. **+49 - 81 41 - 52 71-0**  
Am Sonnenlicht 2 | Fax **+49 - 81 41 - 52 71-129**  
82239 Alling/Germany | E-Mail [sales@meilhaus.com](mailto:sales@meilhaus.com)

Mentioned company and product names may be registered trademarks of the respective companies. Prices in Euro plus VAT. Errors and omissions excepted.  
© Meilhaus Electronic.

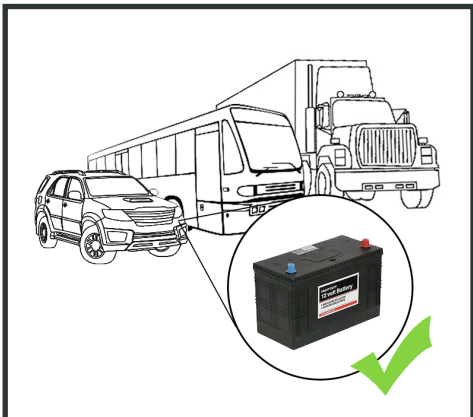
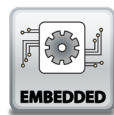
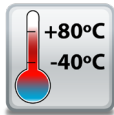
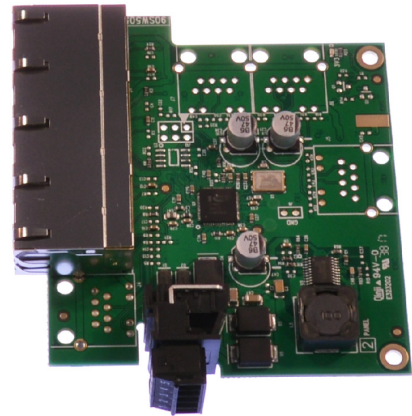
[www.meilhaus.de](http://www.meilhaus.de)

# SW-104

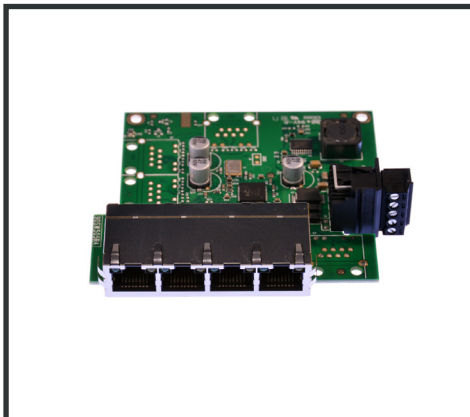
# Embedded 4 Port Ethernet Switch

4 Port Unmanaged Ethernet Switch 10/100

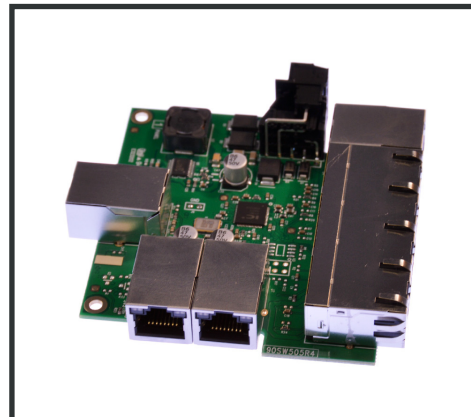
- 4 Port 10/100 Mbs Ethernet Switch
- Redundant dual power inputs: +5V to +30V DC
- No software required - Simply plug in and connect
- Industrial temperature range



+5 to +30 Volt Power Input enables the device to be run from a standard car battery - ideal for in vehicle applications



Embedded format, takes up minimal space, with mounting holes are connected to Functional Earth



Provides additional Ethernet ports for your custom application



# SW-104

## Embedded 4 Port Ethernet Switch 10/100

No software needed: Simply plug in any ethernet cable

-40°C to +80°C/-40°F to +176°F temperature range

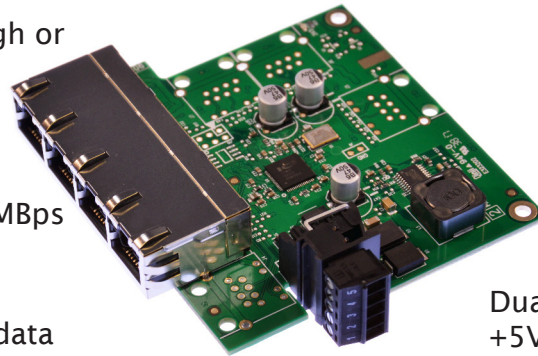
All Ethernet ports are Auto MDI/MDIX supporting straight through or crossover Ethernet cables

Ready for embedded applications

Automatic detection of data transmission speed: 10 or 100 MBps

Power consumption is optimised based on the status of the link device

2k Byte maximum packet size - improves the efficiency of bulk data transfer and system performance



Dual redundant power input: +5VDC to +30VDC

Easy Wire Removable screw terminal block

---

### Connectors

Screw Terminals	3.5mm pitch, #22 - #14, 0.5mm <sup>2</sup> -2.5mm <sup>2</sup> pin power supply
Wire Thickness	0.150 inch, 3.81mm, 20 pins, 12+8 screw terminals, #26 - #16 AWG, 0.14mm <sup>2</sup> -1.3mm <sup>2</sup>

### Power Supply

Power Consumption	1.1 Watts Max : 220 mAmps@+5VDC/36mAmps@+30VDC
Power Supply input	Unregulated +5V to +30Volts DC, reverse polarity protection
Isolation	1500VRMS Magnetic isolation from Ethernet

### Environmental

Operating Temperature	-40°C to +80°C/-40°F to +176°F
Storage Temperature	-40°C to +80°C/-40°F to +176°F
Ambient Relative Humidity	5 to 95% (non-condensing)

### Magjack LED Information

Link/Activity LED	Solid green	Connection established
	Flashing Green	Data communication

---

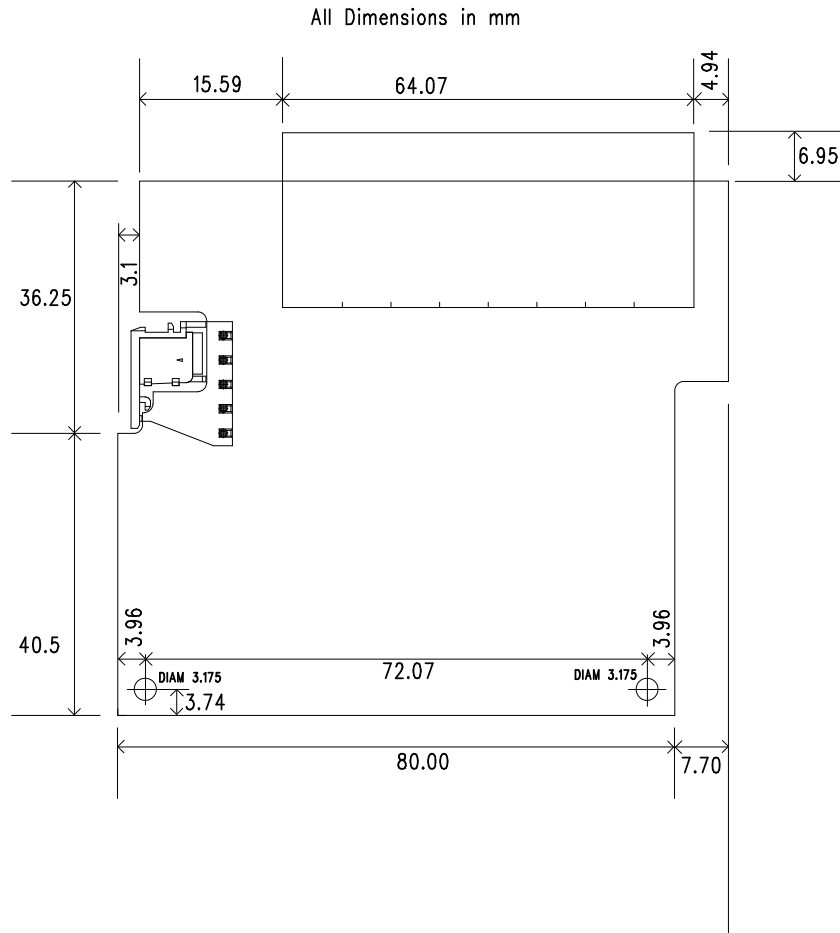
### Ethernet

Ethernet Port	4 x RJ45 jack, 10/100Mhz autosensing, crossover auto sensing (Auto MDIX)
Protection	1,500 Volts magnetic isolation between ports
Housing	This device is uncased for embedded applications The mounting holes are connected to Functional Earth

---

# SW-104

# Embedded 4 Port Ethernet Switch 10/100



### Power Terminal Pin Outs

PIN	FUNCTION
1	-V
2	+VA
3	+VB
4	-V
5	Functional Earth

### Ethernet Ports x4 Pin Outs

PIN	FUNCTION
1	RD+ / TD+
2	RD- / TD-
3	TD+ / RD+
4	NC
5	NC
6	TD- / RD-
7	NC
8	NC

Lifetime Warranty and Support:

We can help with every aspect of your project, from getting you up and running to custom application.

# SW-104

# Embedded 4 Port Ethernet Switch 10/100

## Packaging Information

Packaging	Quick Start Guide
Device	Ethernet Switch 4 port
Packaged Weight	0.082 kg, 2.89 ounces
Packaged Dims	160x135x49 mm, 6.3x5.3x1.9 inches
GTIN Universal Code	837324004175

## Approvals

Industry Approvals	Microsoft Certified Gold Partner, WEEE, RoHS, AEO (C-TPAT), CE
--------------------	--

## Product Support

Warranty	Lifetime - online registration required
Support	Lifetime Web, Email and Phone Support from fully qualified, friendly staff who work in and alongside the Product Development Team

## Additional Information

OEM option	Available for bulk buy OEM
Made In	Manufactured in the UK by Brainboxes Winner 2005 European Electronics Industry Awards 'Manufacturer of the Year'



**PW-600**  
Power supply with connectors for UK, USA, EU and AUS mains socket. 'Tails' are suitable for connecting to screw terminal blocks.



**PW-650**  
Power supply with USB connector and prewired screw terminal block. Suitable for use with 5V USB ports.



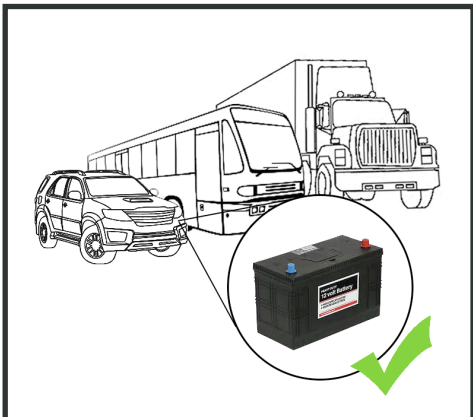
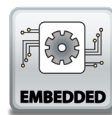
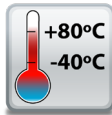
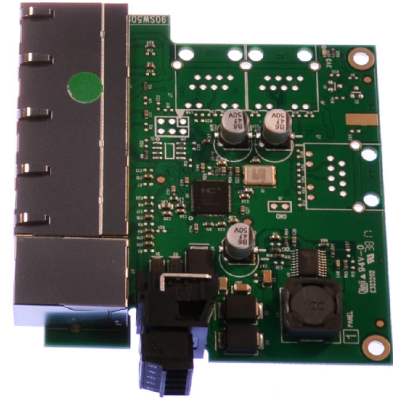
**SW Range**  
Switch products available in a range of formats and specifications.

# SW-105

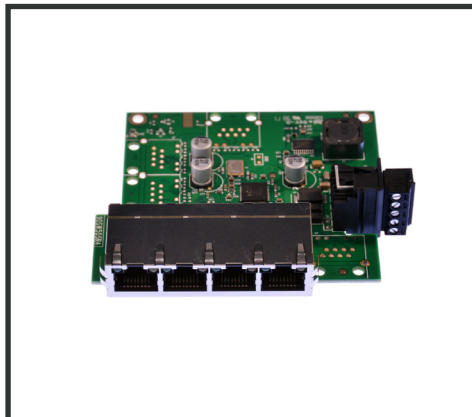
# Embedded 5 Port Ethernet Switch

5 Port Unmanaged Ethernet Switch 10/100

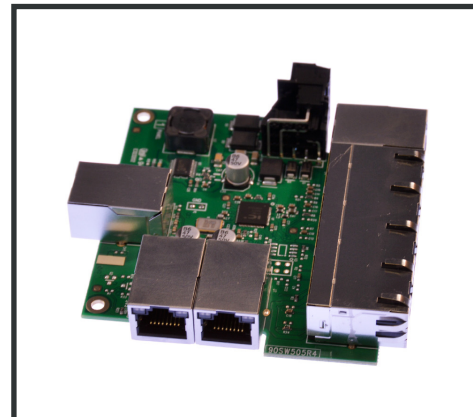
- 5 Port 10/100 Mbs Ethernet Switch
- Redundant dual power inputs: +5V to +30V DC
- No software required - Simply plug in and connect
- Industrial temperature range



+5 to +30 Volt Power Input enables the device to be run from a standard car battery - ideal for in vehicle applications



Embedded format, takes up minimal space, with mounting holes are connected to Functional Earth



Provides additional Ethernet ports for your custom application

# SW-105

## Embedded 5 Port Ethernet Switch 10/100

No software needed: Simply plug in any ethernet cable

-40°C to +80°C/-40°F to +176°F temperature range

All Ethernet ports are Auto MDI/MDIX supporting straight through or crossover Ethernet cables

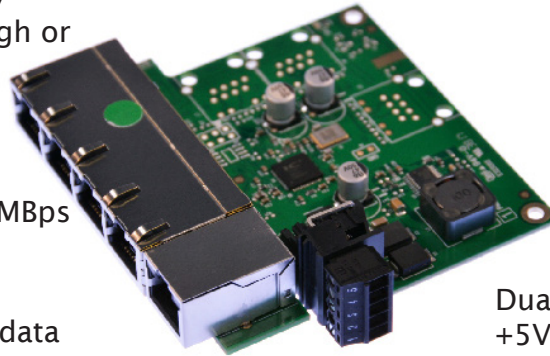
Ready for embedded applications

Automatic detection of data transmission speed: 10 or 100 MBps

Power consumption is optimised based on the status of the link device

2k Byte maximum packet size - improves the efficiency of bulk data transfer and system performance

Dual redundant power input: +5VDC to +30VDC



Easy Wire Removable screw terminal block

---

### Connectors

Screw Terminals	3.5mm pitch, #22 - #14, 0.5mm <sup>2</sup> -2.5mm <sup>2</sup> pin power supply
Wire Thickness	0.150 inch, 3.81mm, 20 pins, 12+8 screw terminals, #26 - #16 AWG, 0.14mm <sup>2</sup> -1.3mm <sup>2</sup>

### Power Supply

Power Consumption	1.35 Watts Max : 260 mAmps@+5VDC/45mAmps@+30VDC
Power Supply input	Unregulated +5V to +30Volts DC, reverse polarity protection
Isolation	1500VRMS Magnetic isolation from Ethernet

### Environmental

Operating Temperature	-40°C to +80°C/-40°F to +176°F
Storage Temperature	-40°C to +80°C/-40°F to +176°F
Ambient Relative Humidity	5 to 95% (non-condensing)

### Magjack LED Information

Link/Activity LED	Solid green	Connection established
	Flashing Green	Data communication

---

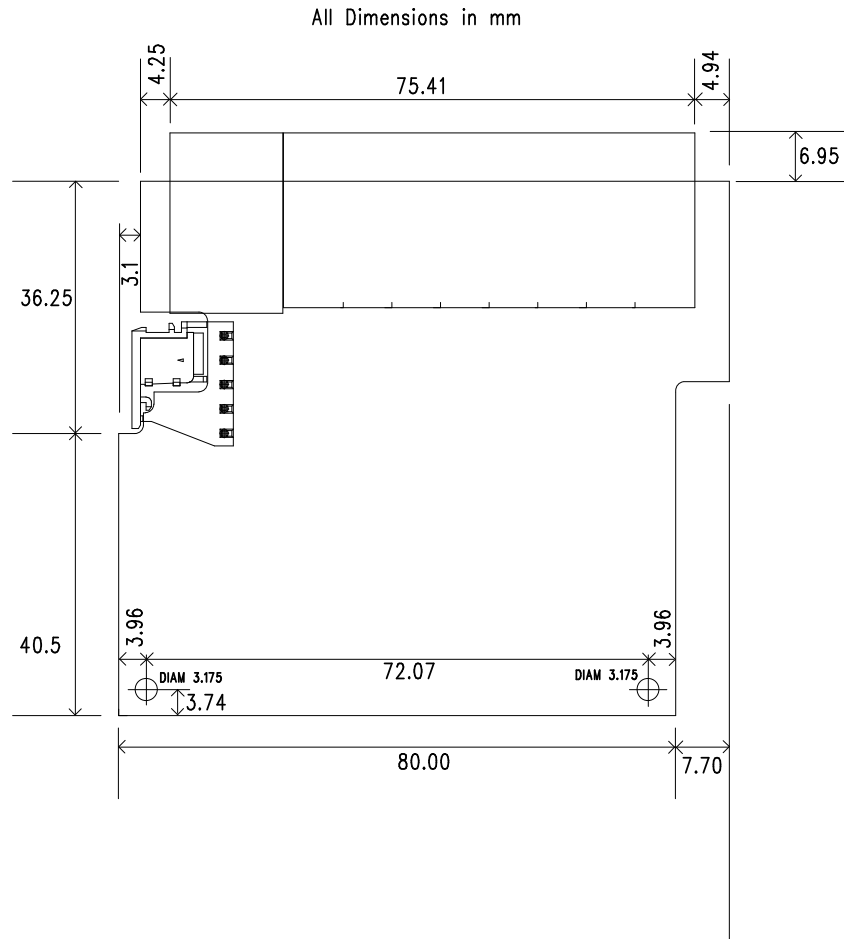
### Ethernet

Ethernet Port	5 x RJ45 jack, 10/100Mhz autosensing, crossover auto sensing (Auto MDIX)
Protection	1,500 Volts magnetic isolation between ports
Housing	This device is uncased for embedded applications The mounting holes are connected to Functional Earth

---

# SW-105

# Embedded 5 Port Ethernet Switch 10/100



### Power Terminal Pin Outs

PIN	FUNCTION
1	-V
2	+VA
3	+VB
4	-V
5	Functional Earth

### Ethernet Ports x5 Pin Outs

PIN	FUNCTION
1	RD+ / TD+
2	RD- / TD-
3	TD+ / RD+
4	NC
5	NC
6	TD- / RD-
7	NC
8	NC

Lifetime Warranty and Support:

We can help with every aspect of your project, from getting you up and running to custom application.



# SW-105

# Embedded 5 Port Ethernet Switch 10/100

## Packaging Information

Packaging	Quick Start Guide
Device	Ethernet Switch 5 port
Packaged Weight	0.088 kg, 3.10 ounces
Packaged Dims	160x135x49 mm, 6.3x5.3x1.9 inches
GTIN Universal Code	837324004168

## Approvals

Industry Approvals	Microsoft Certified Gold Partner, WEEE, RoHS, AEO (C-TPAT), CE
--------------------	--

## Product Support

Warranty	Lifetime - online registration required
Support	Lifetime Web, Email and Phone Support from fully qualified, friendly staff who work in and alongside the Product Development Team

## Additional Information

OEM option	Available for bulk buy OEM
Made In	Manufactured in the UK by Brainboxes Winner 2005 European Electronics Industry Awards 'Manufacturer of the Year'



### PW-600

Power supply with connectors for UK, USA, EU and AUS mains socket. 'Tails' are suitable for connecting to screw terminal blocks.



### PW-650

Power supply with USB connector and prewired screw terminal block. Suitable for use with 5V USB ports.



### SW Range

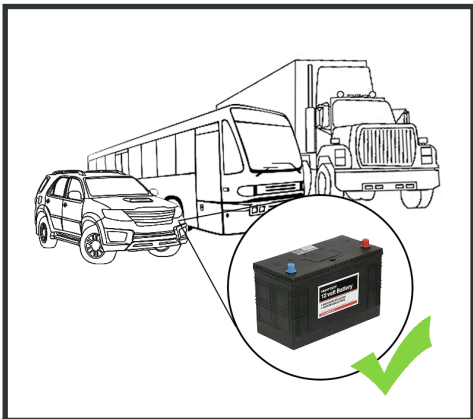
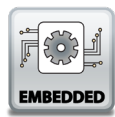
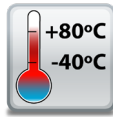
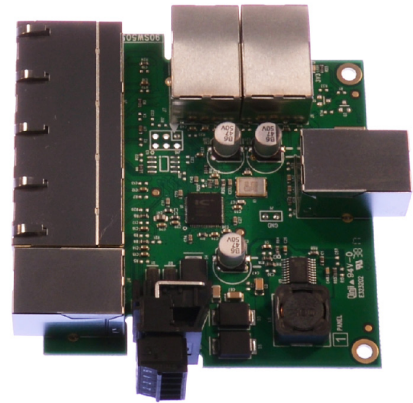
Switch products available in a range of formats and specifications.

# SW-108

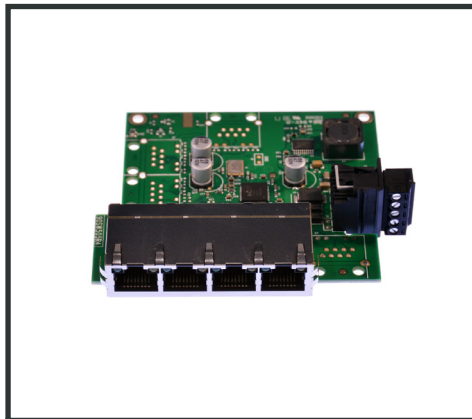
# Embedded 8 Port Ethernet Switch

8 Port Unmanaged Ethernet Switch 10/100

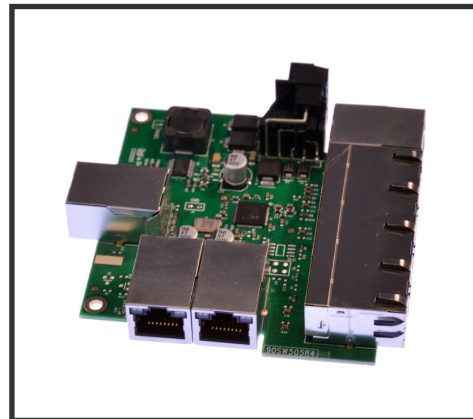
- 8 Port 10/100 Mbs Ethernet Switch
- Redundant dual power inputs: +5V to +30V DC
- No software required - Simply plug in and connect



+5 to +30 Volt Power Input enables the device to be run from a standard car battery - ideal for in vehicle applications



Embedded format, takes up minimal space, with mounting holes are connected to Functional Earth



Provides additional Ethernet ports for your custom application

# SW-108

## Embedded 8 Port Ethernet Switch 10/100

No software needed: Simply plug in any ethernet cable

-40°C to +80°C/-40°F to +176°F temperature range

All Ethernet ports are Auto MDI/MDIX supporting straight through or crossover Ethernet cables

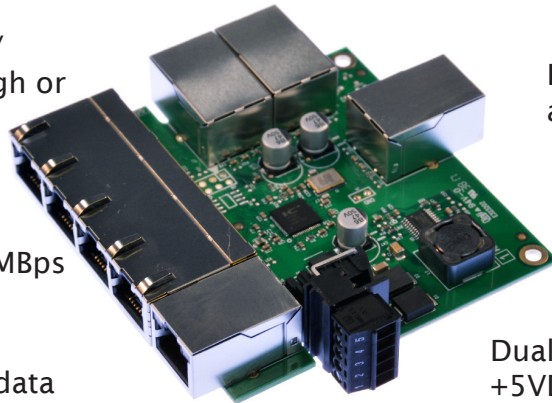
Ready for embedded applications

Automatic detection of data transmission speed: 10 or 100 MBps

Power consumption is optimised based on the status of the link device

2k Byte maximum packet size - improves the efficiency of bulk data transfer and system performance

Dual redundant power input: +5VDC to +30VDC



Easy Wire Removable screw terminal block

---

### Connectors

Screw Terminals	3.5mm pitch, #22 - #14, 0.5mm <sup>2</sup> -2.5mm <sup>2</sup> pin power supply
Wire Thickness	0.150 inch, 3.81mm, 20 pins, 12+8 screw terminals, #26 - #16 AWG, 0.14mm <sup>2</sup> -1.3mm <sup>2</sup>

---

### Power Supply

Power Consumption	1.5 Watts Max : 300 mAmps@+5VDC/50mAmps@+30VDC
Power Supply input	Unregulated +5V to +30Volts DC, reverse polarity protection
Isolation	1500VRMS Magnetic isolation from Ethernet

---

### Environmental

Operating Temperature	-40°C to +80°C/-40°F to +176°F
Storage Temperature	-40°C to +80°C/-40°F to +176°F
Ambient Relative Humidity	5 to 95% (non-condensing)

---

### Magjack LED Information

Link/Activity LED	Solid green	Connection established
	Flashing Green	Data communication

---

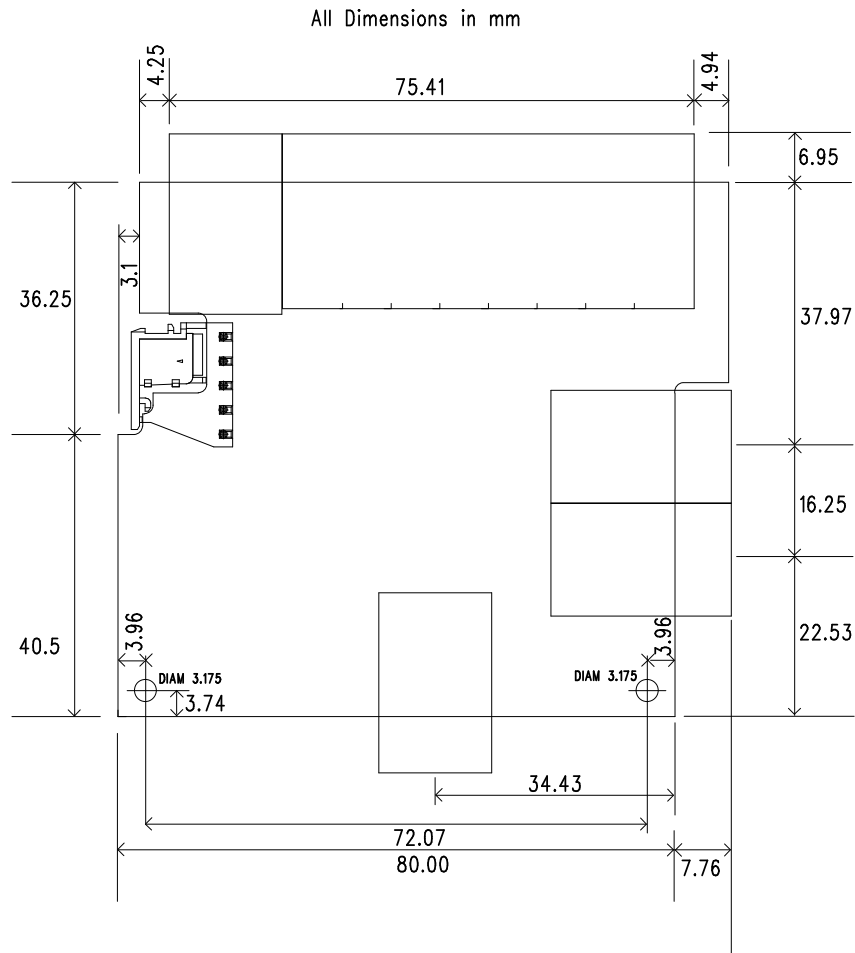
### Ethernet

Ethernet Port	8 x RJ45 jack, 10/100Mhz autosensing, crossover auto sensing (Auto MDIX)
Protection	1,500 Volts magnetic isolation between ports
Housing	This device is uncased for embedded applications The mounting holes are connected to Functional Earth

---

# SW-108

# Embedded 8 Port Ethernet Switch 10/100



### Power Terminal Pin Outs

PIN	FUNCTION
1	-V
2	+VA
3	+VB
4	-V
5	Functional Earth

### Ethernet Ports x8 Pin Outs

PIN	FUNCTION
1	RD+ / TD+
2	RD- / TD-
3	TD+ / RD+
4	NC
5	NC
6	TD- / RD-
7	NC
8	NC

Lifetime Warranty and Support:

We can help with every aspect of your project, from getting you up and running to custom application.

# SW-108

## Embedded 8 Port Ethernet Switch 10/100

### Packaging Information

Packaging	Quick Start Guide
Device	Ethernet Switch 8 port
Packaged Weight	0.110 kg, 3.88 ounces
Packaged Dims	160x135x49 mm, 6.3x5.3x1.9 inches
GTIN Universal Code	837324004151

### Approvals

Industry Approvals	Microsoft Certified Gold Partner, WEEE, RoHS, AEO (C-TPAT), CE
--------------------	--

### Product Support

Warranty	Lifetime - online registration required
Support	Lifetime Web, Email and Phone Support from fully qualified, friendly staff who work in and alongside the Product Development Team

### Additional Information

OEM option	Available for bulk buy OEM
Made In	Manufactured in the UK by Brainboxes Winner 2005 European Electronics Industry Awards 'Manufacturer of the Year'



#### PW-600

Power supply with connectors for UK, USA, EU and AUS mains socket. 'Tails' are suitable for connecting to screw terminal blocks.



#### PW-650

Power supply with USB connector and prewired screw terminal block. Suitable for use with 5V USB ports.



#### SW Range

Switch products available in a range of formats and specifications.