

Product Datasheet - Technical Specifications



More information in our Web-Shop at ► www.meilhaus.com

Your contact

Technical and commercial sales, price information,
quotations, demo/test equipment, consulting:

Tel.: **+49 - (0)81 41 - 52 71-0**

FAX: **+49 - (0)81 41 - 52 71-129**

E-Mail: sales@meilhaus.com

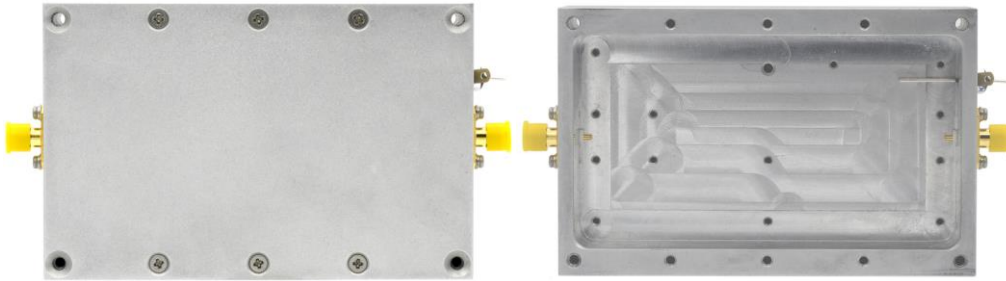
Meilhaus Electronic GmbH
Am Sonnenlicht 2
82239 Alling/Germany

Tel. **+49 - (0)81 41 - 52 71-0**
Fax **+49 - (0)81 41 - 52 71-129**
E-Mail sales@meilhaus.com

Mentioned company and product names may be registered trademarks of the respective companies. Errors and omissions excepted. © Meilhaus Electronic.

RF HOUSINGS

The TBRFH5 housing is ideal for RF building blocks such as amplifiers or similar. The housing is milled from aluminium and equipped with SMA-female connectors and a feed through capacitor for the power supply line.



TBRFH5

TBRFH5, interior

1 Technical data

Part #	Outer dimensions [mm]	Inner dimensions [mm]	Material	Surface finishing	RF connectors	Detail	Weight [g]
TBRFH5	68 x 106 x 32	54 x 98 x 22	Alu A6061	Sandblasted	SMA-Female	Feed through capacitor, 10nF, 50V	380

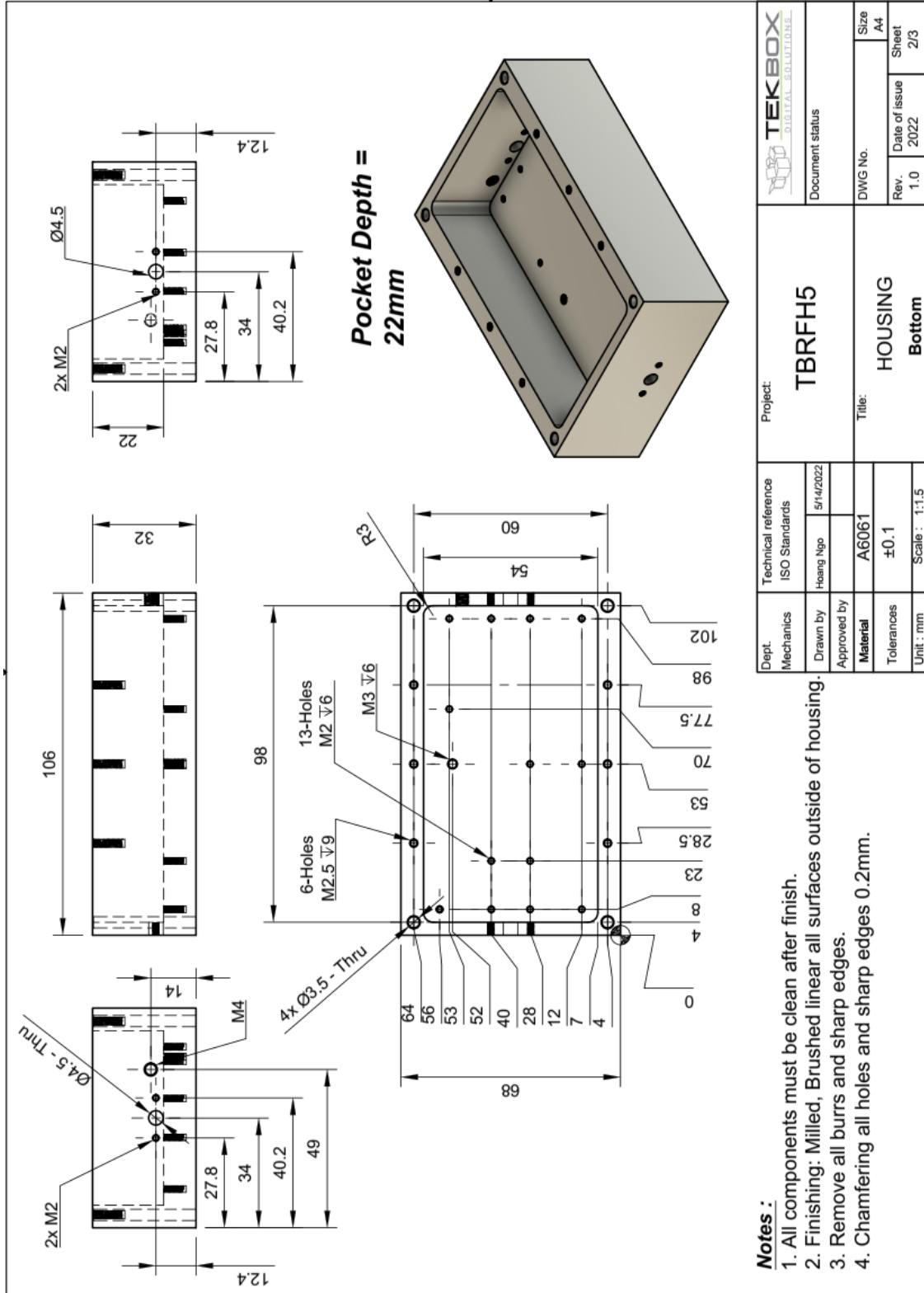
2 Customization

Contact us, if you need customized housings. Following details can be customized, depending on ordering volume:

- RF connectors
- Absorbing foam
- Position and number of feed-through capacitors
- Laser engraving
- Surface finishing

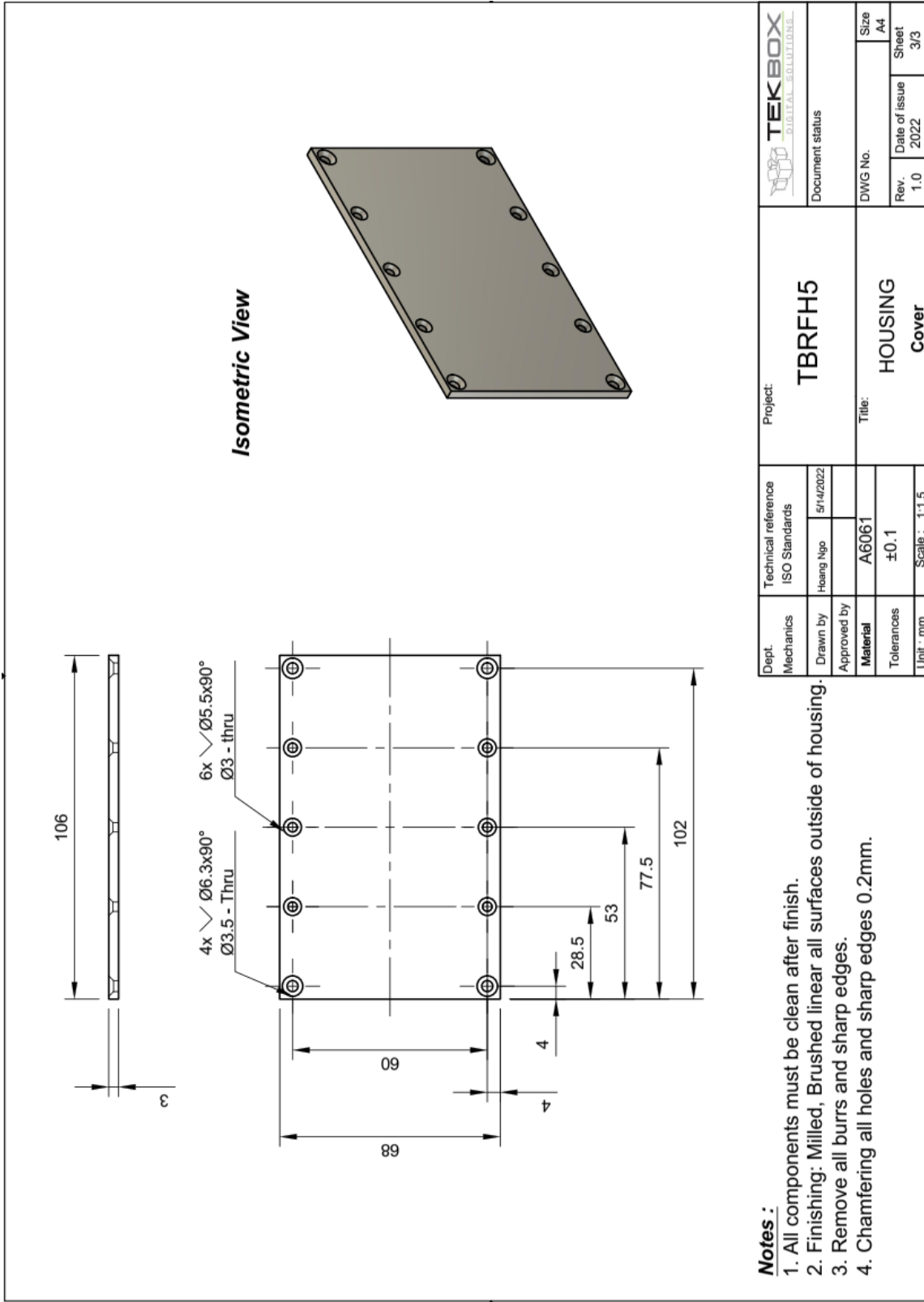
RF HOUSINGS

3 Mechanical drawings



Dept. Mechanics	Technical reference ISO Standards	Project: TBRFH5	TEKBOX DIGITAL SOLUTIONS
Drawn by Hoang Ngo	5/14/2022	Document status	
Approved by		DWG No.	Size A4
Material A6061		Rev. 1.0	Date of issue 2022
Tolerances ±0.1		Sheet 2/3	
Unit : mm	Scale : 1:1.5	Title: HOUSING Bottom	

RF HOUSINGS



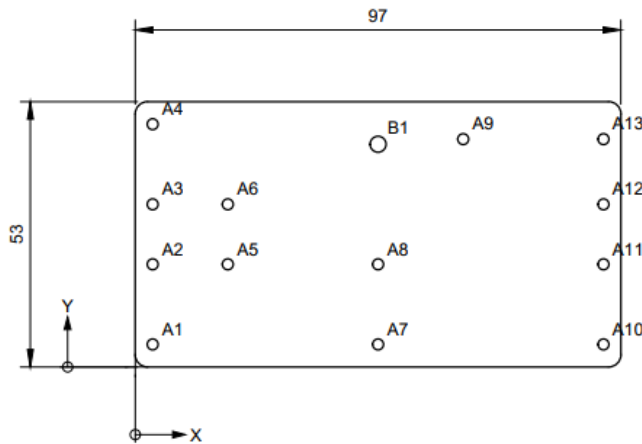
Notes :

1. All components must be clean after finish.
2. Finishing: Milled, Brushed linear all surfaces outside of housing.
3. Remove all burrs and sharp edges.
4. Chamfering all holes and sharp edges 0.2mm.

Dept. Mechanics	Technical reference ISO Standards	Project:		TEKBOX DIGITAL SOLUTIONS
		TBRFH5		
Drawn by	Heang Ngo	5/14/2022	DWG No.	Size A4
Approved by			Rev.	Date of issue 2022
Material	A6061		1.0	Sheet 3/3
Tolerances	±0.1		Title: HOUSING Cover	
Unit : mm	Scale : 1:1.5			

RF HOUSINGS

*Recommended PCB Dimension
PCB thickness : 1.6mm



B1	48.5	44.5	Ø3.2
A13	93.5	45.5	Ø2.2
A12	93.5	32.5	Ø2.2
A11	93.5	20.5	Ø2.2
A10	93.5	4.5	Ø2.2
A9	65.5	45.5	Ø2.2
A8	48.5	20.5	Ø2.2
A7	48.5	4.5	Ø2.2
A6	18.5	32.5	Ø2.2
A5	18.5	20.5	Ø2.2
A4	3.5	48.5	Ø2.2
A3	3.5	32.5	Ø2.2
A2	3.5	20.5	Ø2.2
A1	3.5	4.5	Ø2.2
Hole	X Dim	Y Dim	Description
Hole Table			

4 Ordering Information

Part Number	Description
TBRFH5	68 x 106 x 32 mm RF housing, pre-assembled with SMA-female connectors and feed through capacitor

5 History

Version	Date	Author	Changes
1.0	23.08.2022	Minh Nguyen	Creation of the document
1.1	07.02.2023	Minh Nguyen	Update drawing (Add Recommended PCB dimension)