

Product Datasheet - Technical Specifications



More information in our Web-Shop at ► www.meilhaus.com

Your contact

Technical and commercial sales, price information,
quotations, demo/test equipment, consulting:

Tel.: **+49 - (0)81 41 - 52 71-0**

FAX: **+49 - (0)81 41 - 52 71-129**

E-Mail: sales@meilhaus.com

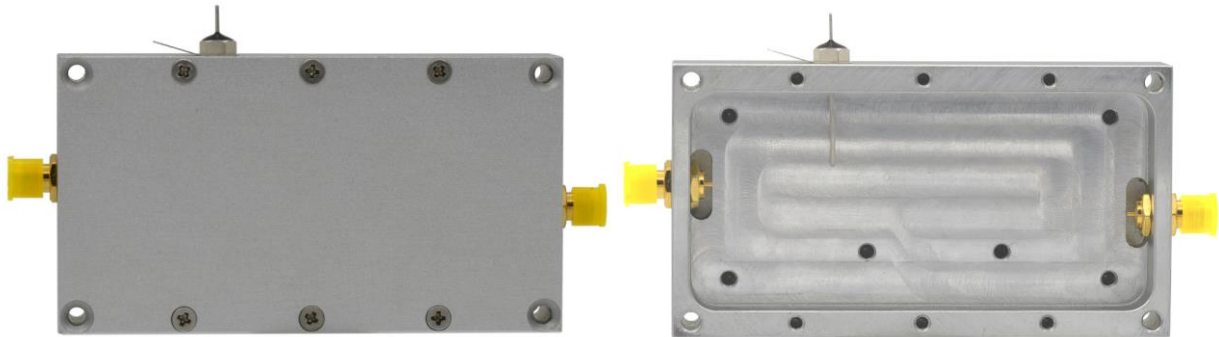
Meilhaus Electronic GmbH
Am Sonnenlicht 2
82239 Alling/Germany

Tel. **+49 - (0)81 41 - 52 71-0**
Fax **+49 - (0)81 41 - 52 71-129**
E-Mail sales@meilhaus.com

Mentioned company and product names may be registered trademarks of the respective companies. Errors and omissions excepted. © Meilhaus Electronic.

RF HOUSINGS

The TBRFH6 housing is ideal for RF building blocks such as amplifiers or similar. The housing is milled from aluminium and equipped with SMA-female connectors and a feed through capacitor for the power supply line.



TBRFH6

TBRFH6, interior

1 Technical data

Part #	Outer dimensions [mm]	Inner dimensions [mm]	Material	Surface finishing	RF connectors	Detail	Weight [g]
TBRFH6	50 x 91.4 x 18	39.7 x 84.4 x 9.5	Alu A6061	Sandblasted	SMA-Female	Feed through capacitor, 10nF, 50V	180

2 Customization

Contact us, if you need customized housings. Following details can be customized, depending on ordering volume:

- RF connectors
- Absorbing foam
- Position and number of feed-through capacitors
- Laser engraving
- Surface finishing

RF HOUSINGS

3 Mechanical drawings

Hole table dimensions

Hole Table			Description
Hole	X Dim	Y Dim	
A1	3.5	3.2	Ø4 x 90° Ø3.2
A2	3.5	46.8	Ø4 x 90° Ø3.2
A3	87.9	3.2	Ø4 x 90° Ø3.2
A4	87.9	46.8	Ø4 x 90° Ø3.2
B1	10.45	10	Ø3 x 90° M3x0.5 6H x 6/6
B2	10.45	40	Ø3 x 90° M3x0.5 6H x 6/6
B3	30.45	35	Ø3 x 90° M3x0.5 6H x 6/6
B4	55.45	35	Ø3 x 90° M3x0.5 6H x 6/6
B5	80.95	10	Ø3 x 90° M3x0.5 6H x 6/6
B6	80.95	40	Ø3 x 90° M3x0.5 6H x 6/6
C1	22.7	47.25	Ø2.5 x 90° M2.5x0.45 6H x 10/10
C2	22.7	2.75	Ø2.5 x 90° M2.5x0.45 6H x 10/10
C3	45.7	47.25	Ø2.5 x 90° M2.5x0.45 6H x 10/10
C4	45.7	2.75	Ø2.5 x 90° M2.5x0.45 6H x 10/10
C5	68.7	47.25	Ø2.5 x 90° M2.5x0.45 6H x 10/10
C6	68.7	2.75	Ø2.5 x 90° M2.5x0.45 6H x 10/10

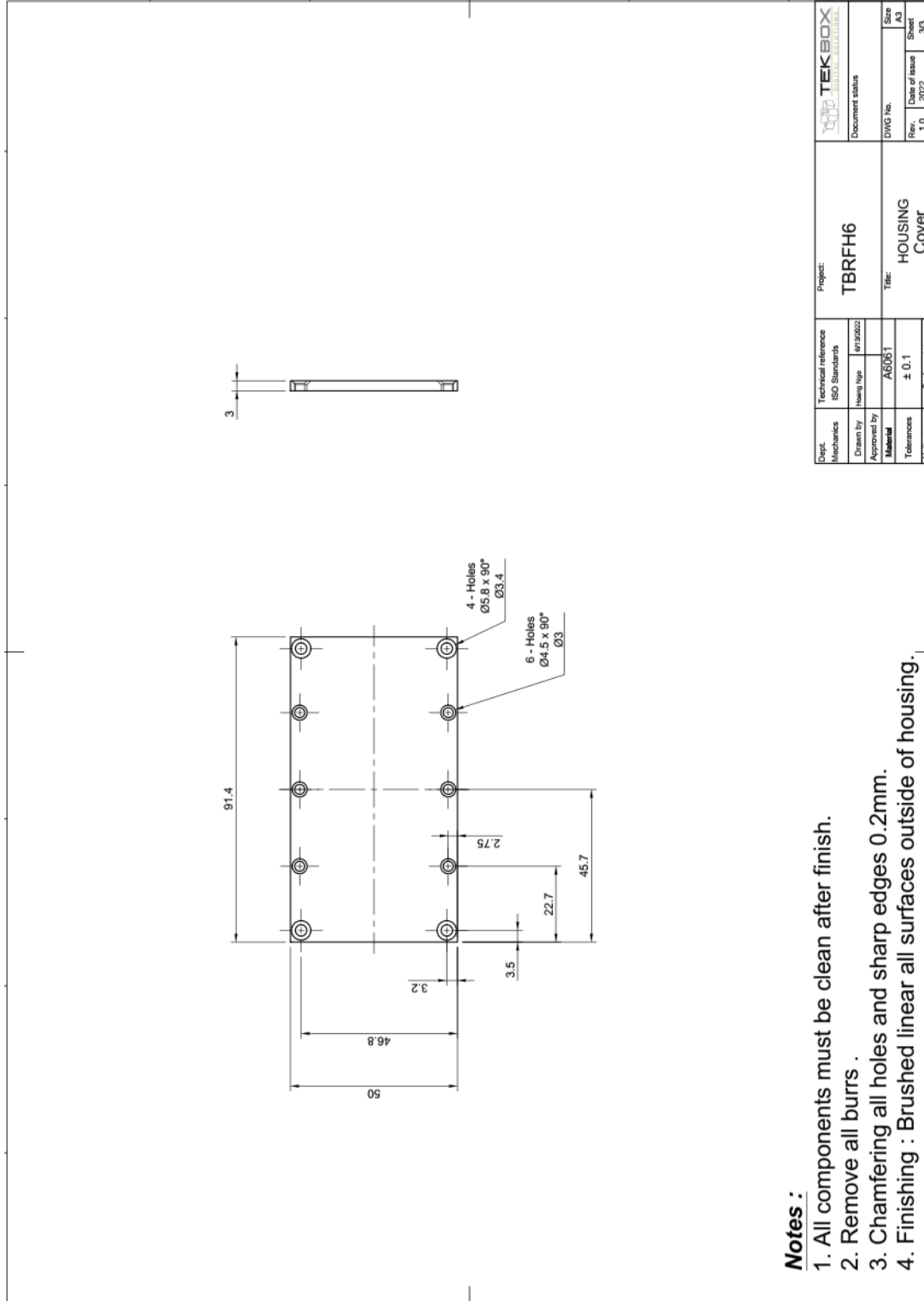
Pocket Depth = 9.5 mm

Dept. Mechanics	Technical reference ISO Standards	Project: TBRFH6	Document status
Drawn by: g19/2022	Issue type: g19/2022	DWG No.	Size A3
Approved by: Material	Material: AG06T	Rev. 1.0	Date of issue 7/2022
Tolerance: ± 0.1	Scale: 1:1	Sheet 43 of 43	
Unit: mm			

Notes :

- All components must be clean after finish.
- Remove all burrs.
- Chamfering all holes and sharp edges 0.2mm.
- Finishing : Brushed linear all surfaces outside of housing.
- Tapping holes (1/4-36 UNS) mount Connector (SMA - 50KYD - 2).

RF HOUSINGS



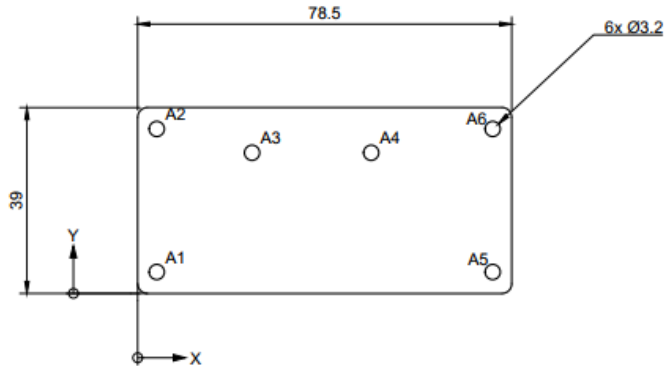
Notes :

1. All components must be clean after finish.
2. Remove all burrs .
3. Chamfering all holes and sharp edges 0.2mm.
4. Finishing : Brushed linear all surfaces outside of housing.

Dept. Mechanics	Technical reference ISO Standards	Project: TBRFH6	TEKBOX DIGITAL SOLUTIONS
Drawn by Haseem	Issue No 4/1/2022	Document status	
Approved by Material	A6/06/1	DWG No.	
Tolerance ± 0.1		Rev.	1.0
UNIT: mm	Scale: 1:1	Date of issue	2022
		Sheet	3/3
		Size	A3
		Title: HOUSING Cover	

RF HOUSINGS

*Recommended PCB Dimension
PCB thickness : 1.4mm



A6	74.5	34.5
A5	74.5	4.5
A4	49	29.5
A3	24	29.5
A2	4	34.5
A1	4	4.5
Hole	X Dim	Y Dim
Hole Table		

4 Ordering Information

Part Number	Description
TBRFH6	50 x 91.4 x 18 mm RF housing, pre-assembled with SMA-female connectors and feed through capacitor

5 History

Version	Date	Author	Changes
1.0	23.08.2022	Minh Nguyen	Creation of the document
1.1	07.02.2023	Minh Nguyen	Update drawing (Add Recommended PCB dimension)