

Product Datasheet - Technical Specifications



More information in our Web-Shop at ► www.meilhaus.com and in our download section.

Your contact

**Technical and commercial sales, price information,
quotations, demo/test equipment, consulting:**

Tel.: **+49 - 81 41 - 52 71-0**

FAX: **+49 - 81 41 - 52 71-129**

E-Mail: sales@meilhaus.com

Downloads:
www.meilhaus.com/en/infos/download.htm

Meilhaus Electronic GmbH | Tel. **+49 - 81 41 - 52 71-0**
Am Sonnenlicht 2 | Fax **+49 - 81 41 - 52 71-129**
82239 Alling/Germany | E-Mail sales@meilhaus.com

Mentioned company and product names may be registered trademarks of the respective companies. Prices in Euro plus VAT. Errors and omissions excepted.
© Meilhaus Electronic.

www.meilhaus.de

US-313 - USB 2 Port RS422/485 1MBaud

CONNECT, CONFIGURE, CONTROL YOUR SERIAL DEVICES

Features

- 2 port RS422/485
- 128 Byte Tx and 384 Byte Rx FIFOs
- Up to 921,600 Baud
- DB9 Connector - 9 Pin Male connector (9 Pin Male)
- IP-30 rated enclosure
- Drivers for all popular operating systems
- LED status indication
- Supplied with USB cable
- Supplied with rubber feet for office environment
- Optional DIN rail mounting kits
- Lifetime Warranty* and Lifetime Support

* Registration required



Description

USB to Serial adapter providing two RS422/485 serial ports. Data transfer rates up to 921,600 baud rates and the 128 byte deep transmit and 384 byte receive FIFOs, coupled with 1Mbit line drivers deliver uncompromising performance on your laptop/PC. Drivers for Windows 32 bit and 64 bit Operating Systems including Windows XP, Server 2003, Vista, Server 2008, Windows 7 and Windows 8 with additional drivers for both Mac OS X and Linux.

USB to serial is the quick low cost way to connect your computer to a serial comms enabled device. Boost software gives industry leading functionality and compatibility.

These products do away with traditional issues with USB technology so you can buy with confidence!

With Brainboxes industry renowned Lifetime Warranty and Lifetime Support!

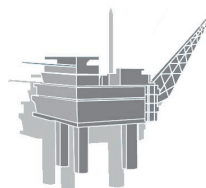
Example Application



CNC Machine



Point of Sale



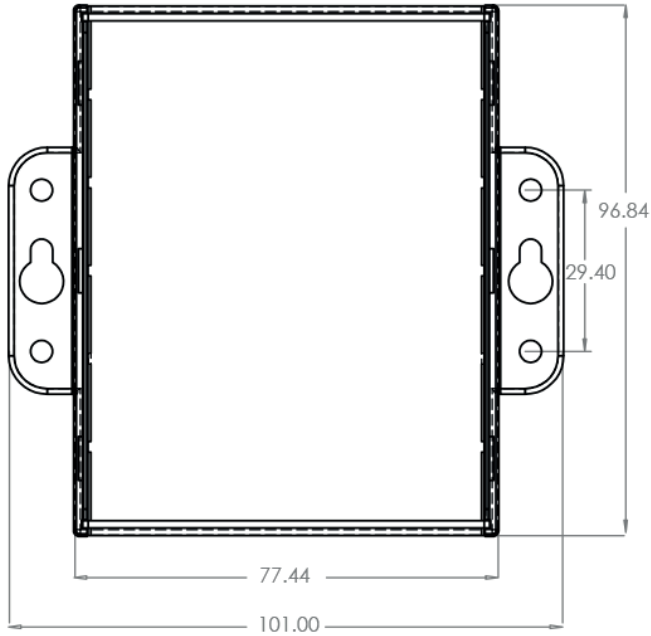
Oil Rig



Laboratory

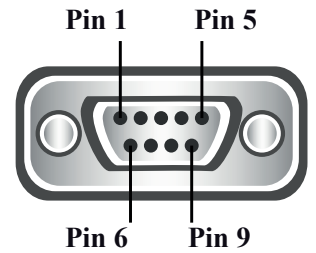
US-313 - USB 2 Port RS422/485 1MBaud

Box Information



| | |
|--------------|------|
| Pin 1 | TXD- |
| Pin 2 | TXD+ |
| Pin 3 | RTS- |
| Pin 4 | RTS+ |
| Pin 5 | GND |
| Pin 6 | RXD- |
| Pin 7 | RXD+ |
| Pin 8 | CTS |
| Pin 9 | CTS+ |

RS422/485 Pinout (9 Pin)



Device Dimensions

Size - 100x102x27 mm, 3.9x4.0x1.1 inches

LED Information

| | | |
|-------------------------|----------------|----------|
| Status LED | Green | Power On |
| Serial Port LEDs | Green light on | Data TX |
| | Green light on | Data RX |

Port

| | |
|---------------------------|---|
| Ports | 2 x RS422/485 |
| Connector | DB9 Connector - 9 Pin Male connector (9 Pin Male) |
| FIFO Size | 384 RX FIFO + 128 TX FIFO |
| Operating Distance | RS422/485 Standard 4000 ft : 1200 metres |
| Cable | USB cable Type A to B 1 metre 3ft |

US-313 - USB 2 Port RS422/485 1MBaud

Port Settings

| | |
|--------------|-------------------------------------|
| Baud Rate | 921,600 |
| Data Bits | 7 or 8 |
| Parity | Odd, Even, None, Mark or Space |
| Stop Bits | 1 or 2 |
| Flow Control | RTS/CTS, DSR/DTR, XON/XOFF |
| Tx/Rx Modes | Full Duplex, Half Duplex Autogating |

Product Information

| | |
|-------------------|-----------------------|
| Power Consumption | 180mA @ 5V |
| Product Weight | 0.115 kg, 4.06 ounces |

Interface

| | |
|------------------|--|
| OS Compatibility | Microsoft Windows 8 32 bit 64 bit Editions Microsoft Windows 7 32 bit 64 bit Editions Windows Server 2008 32 bit 64 bit Editions Windows Vista 32 bit 64 bit Editions |
| BUS | USB 2.0 |



Approvals

| | |
|--------------------------|---|
| Industry Approvals | Microsoft Certified Gold Partner WEEE RoHS |
| Microsoft Approvals | AEO C-TPAT |
| Microsoft Signed Drivers | Windows 8 32 bit 64 bit Editions Windows 7 32 bit 64 bit Editions Windows Vista 32 bit 64 bit editions Windows XP 32 bit 64 bit editions |



Packing Information

| | |
|-----------------|---|
| Packaging | Installation CD including manual, Microsoft signed drivers & utilities |
| Device | USB 2 Port RS422/485 1MBaud |
| Optional Extras | DIN-Rail Mounting Kit - MK-048 Power through USB, no extra power supplied required Power through USB, no extra power supplied required |
| Packaged Weight | 0.280 kg, 9.88 ounces |
| Packaged Dims | 160x135x45 mm, 6.3x5.3x1.8 inches |

Product Support

| | |
|----------|---|
| Warranty | Lifetime - online registration required |
| Support | Lifetime Web, Email and Phone Support from fully qualified, friendly staff who work in and alongside the Product Development Team |



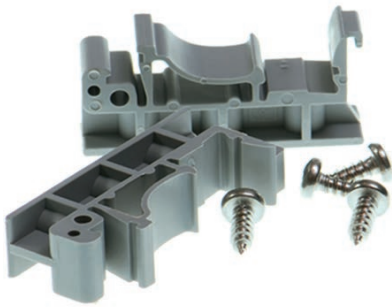
US-313 - USB 2 Port RS422/485 1MBaud

Additional Information

| | |
|---------------------|--|
| OEM option | Available for bulk buy OEM |
| Made In | Manufactured in the UK by Brainboxes Winner 2005 European Electronics Industry Awards 'Manufacturer of the Year' |
| Customisable | Brainboxes operate a 'Perfect Fit Custom Design' policy for volume users. |

Optional Extras

ORDER CODE - DIN-Rail Mounting Kit - MK-048



ORDER CODE - Additional Power through USB, no extra power supplied required