

## Product Datasheet - Technical Specifications



More information in our Web-Shop at ► [www.meilhaus.com](http://www.meilhaus.com) and in our download section.

### Your contact

Technical and commercial sales, price information,  
quotations, demo/test equipment, consulting:

Tel.: **+49 - 81 41 - 52 71-0**

FAX: **+49 - 81 41 - 52 71-129**

E-Mail: [sales@meilhaus.com](mailto:sales@meilhaus.com)

Downloads:

[www.meilhaus.com/en/infos/download.htm](http://www.meilhaus.com/en/infos/download.htm)

**Meilhaus Electronic GmbH** | Tel. **+49 - 81 41 - 52 71-0**  
Am Sonnenlicht 2 | Fax **+49 - 81 41 - 52 71-129**  
82239 Alling/Germany | E-Mail [sales@meilhaus.com](mailto:sales@meilhaus.com)

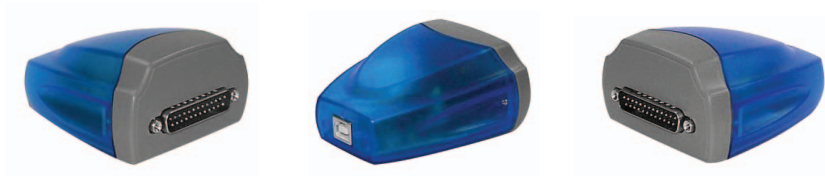
Mentioned company and product names may be registered trademarks of the respective companies. Prices in Euro plus VAT. Errors and omissions excepted.  
© Meilhaus Electronic.

[www.meilhaus.de](http://www.meilhaus.de)

The latest PCs or notebooks are all equipped with USB ports, COM ports are mostly obsolete. These modules are converters from USB to serial COM. Use them to connect classic serial devices with RS232 (25-pin D-sub) to USB ports.

- Adds one high speed RS-232 serial port by connecting to a USB port.
- Powered by USB port, no external power adapter required.
- LEDs indicate TxD and RxD for easy port monitoring and diagnosis.
- Installs as a standard Windows COM port.
- Full RS-232 modem control signals and hardware/software flow control.
- Serial port protected with surge protection of 10kV.
- Non-standard baudrates supported.
- Easy plug and play installation and RS-232 device connection.
- High speed serial port with baud rate up to 921.6kbps.
- Supports Windows XP to 10.

## USB-COM-25



USB-Bus	
Compliance	USB 1.0/1.1 compliant, USB 2.0 & 3.0 compatible
Speed	12Mbps, full-speed USB
FIFO	128 byte transmit, 384 byte receive
Serial Interface	
Interface	RS-232
Number of Ports	1
Connector	25-pin D-sub
Max. Speed	921.6kbps for transmit & receive
RS-232 Signals	DCD, RxD, TxD, DTR, GND, DSR, RTS, CTS, RI
Protection	10kV ESD protection for all signals
Serial Communication Parameters	
Data Bits	7, 8
Parity	None, odd, even, mark, space
Stop Bit	1, 1.5, 2
Flow Control	Hardware (RTS, CTS), XON/XOFF
Power	
Power Input	Power supplied via USB (5V) connector; no external power needed
Mechanical	
Casing	Plastic, ABS
Environmental	
Operating Temperature	0 to 55°C
Storage Temperature	-20 to 75°C
Operating Humidity	5% to 95% RH
Safety Approvals	CE, FCC