

## Product Datasheet - Technical Specifications



More information in our Web-Shop at ► [www.meilhaus.com](http://www.meilhaus.com)

### Your contact

Technical and commercial sales, price information,  
quotations, demo/test equipment, consulting:

Tel.: **+49 - (0)81 41 - 52 71-0**

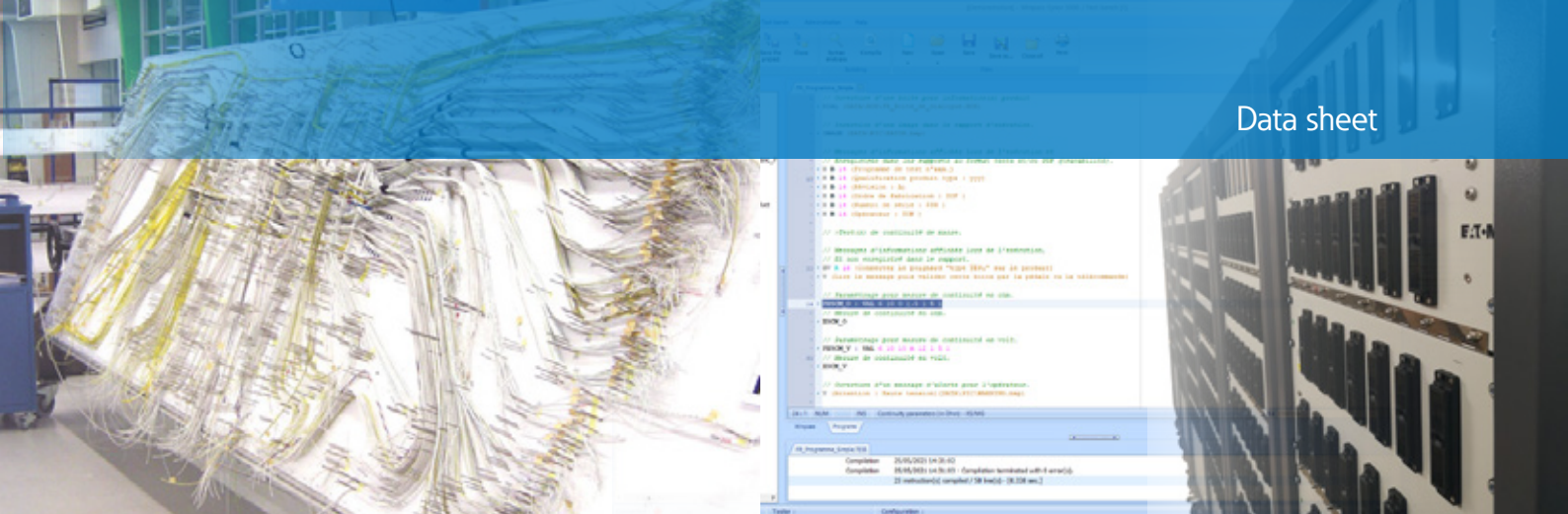
E-Mail: [sales@meilhaus.com](mailto:sales@meilhaus.com)

**Meilhaus Electronic GmbH**  
Am Sonnenlicht 2  
82239 Alling/Germany

Tel. **+49 - (0)81 41 - 52 71-0** E-  
Mail [sales@meilhaus.com](mailto:sales@meilhaus.com)

Mentioned company and product names may be registered trademarks of the respective companies. Errors and omissions excepted. © Meilhaus Electronic.

**[www.meilhaus.com](http://www.meilhaus.com)**



# WINPASS-5000

**Control software  
for SYNOR 5000 wiring testers**



## The advantages of WINPASS-5000:

**Test automation** with a single piece of software

**Centralization** of test data and results

**Multiple control possibilities:** Ethernet, RS232 or IEEE488-2

**Product Quality tested:** launch of test programs or projects according to manufacturing and quality processes

**Test traceability** and recorded data are configurable

**Generation of standard or custom reports** in Word, PDF, Excel, HTML, RVF and CSV

**Access to functions** depending on user account levels (operator, supervisor or administrator)

**Simple interface mode** dedicated to production

**Interactions with the operator** during the test are adjustable according to need (dialogue boxes)

**Multilingual software**

**Simple updates** included with the licenses

**Test bench maintenance:** facilitated by self-test and diagnostic programs

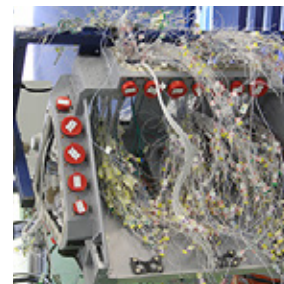
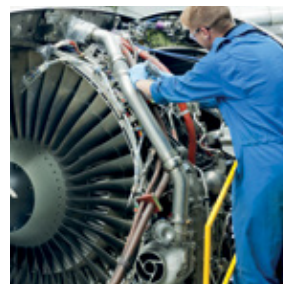
**WINPASS-5000** and **WINPASS-5000 Premium**, EATON software combined with SYNOR 5000 testers, represent the most advanced and powerful solution for testing wiring, harnesses, backplanes, connectors, electronic boards, etc.

The functions of **WINPASS-5000** allow most wiring and harness tests to be performed.

The extended capacity of **WINPASS-5000 Premium** offers powerful advanced features such as management of variables, editing of test interfaces for the creation of equivalence tables, and full customization of test programs and reports.

**WINPASS-5000** and **WINPASS 5000 Premium** can also drive many measuring instruments such as multimeters, recorders, power supplies, etc. and all SEFELEC devices to combine measurement and testing in a single SYNOR bench.

Finally, SEFELEC offers training tailored to the customer environment and to the products tested.

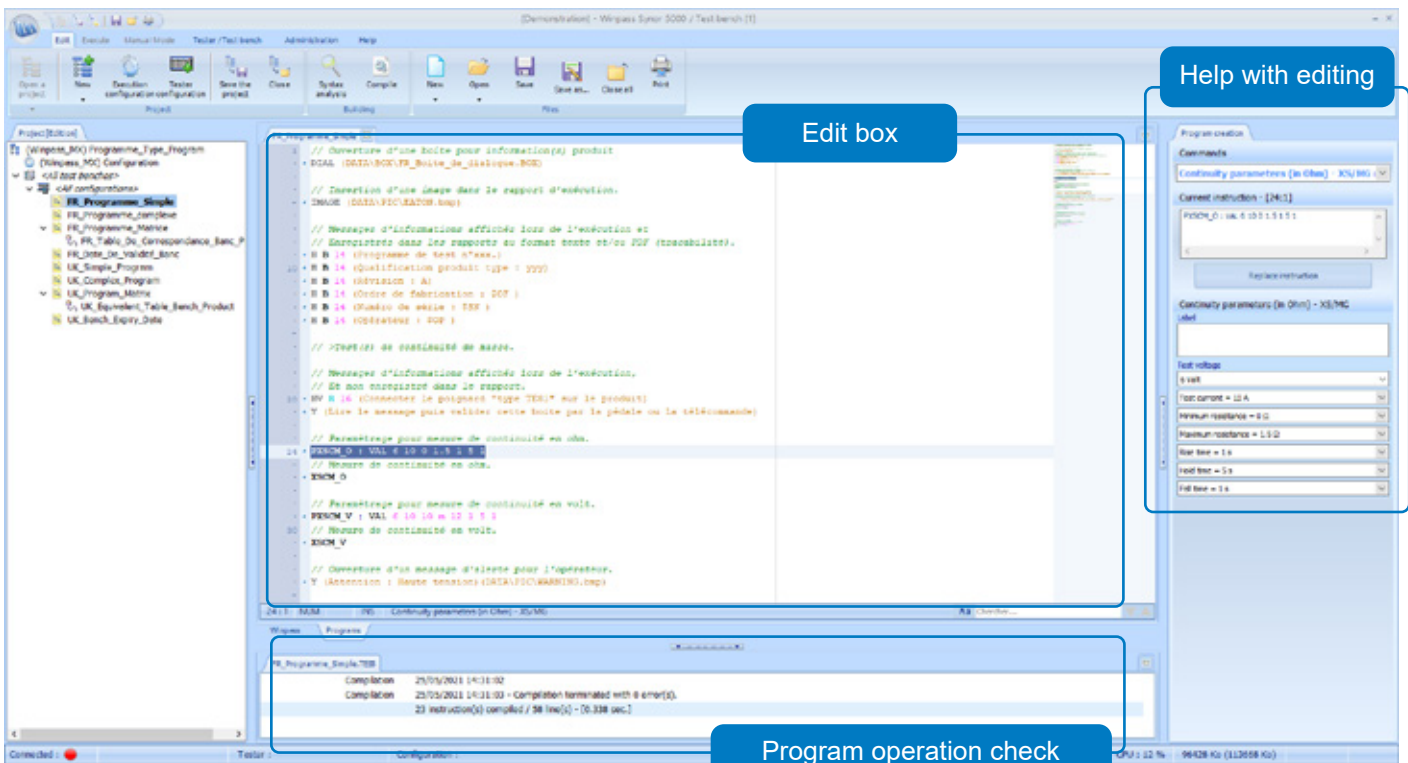


Powering Business Worldwide



# WINPASS-5000: Essential functions for a test program

Simple and intuitive **Program Editor mode**. Self-programming function from standard cabling. Using equivalence tables for direct tester point / product point transcription.



**Automatic run mode** with clear interface dedicated to production testing.



**Manual run mode**, or with shut-down on a fault to analyse a fault or a step program

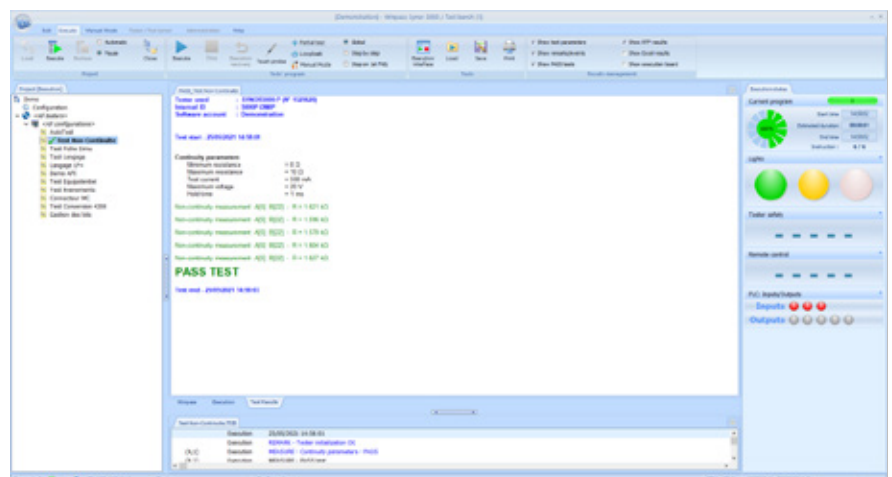


Viewing of the profile of measured values

**Results saving** in WINPASS format.

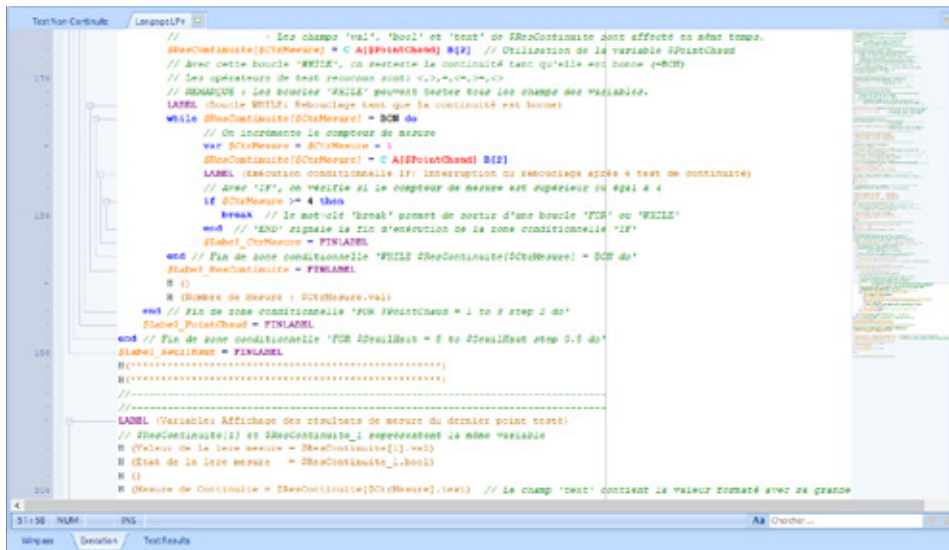
File exporting as pdf, txt, xls.

The user chooses the information that will appear in the results file.

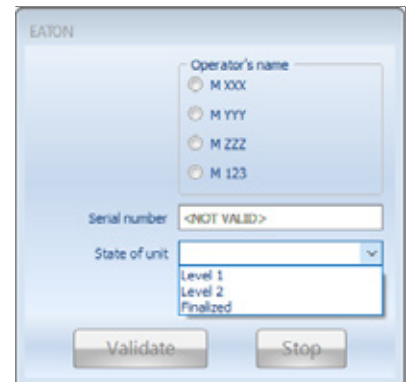


## WINPASS-5000 PREMIUM Advanced features

**Advanced program controls** for managing variables, test loops, conditional loops, external devices, etc.



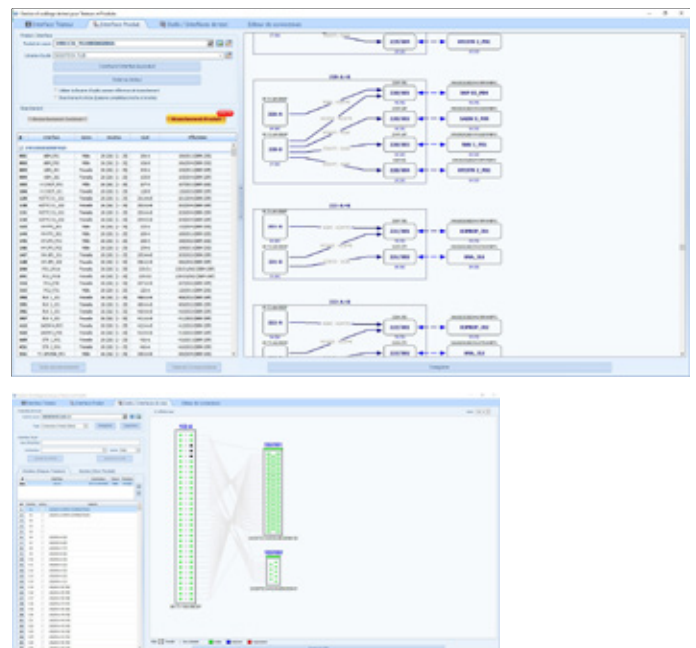
**Dialogue boxes** with drop-down list management, choice of test to be run, etc.



**Test reports customizable** according to the user's needs. Integration of variables defined by program or calculation. Management of backup directories.

Process n° : xx Index : A	Control record	<b>EATON</b> Powering Business Worldwide
Product reference : UK_OUT_simulator	Date : 06/11/2020 14:27:04	
Serial number : 12344azet	By : M PAGON	
State of product : Finalized	Test bench n° : 5000P-DMP	
Test of the button: test of opening and closing of the button.		
Sanction : FAIL		
Operating of lights: test of front panel lights.		
Sanction : PASS		
Measurement of components: measurement of passive components.		
Sanction : FAIL		
Continuity measurement, R = 208.283 Ω		
Resistance measurement, R = 10.966 kΩ		
Capacitance measurement, C = 89.754 µF		
Zener diode measurement, d = 50.828 V		
Measurement in high voltage: quality test of wiring.		
Sanction : FAIL		
FINAL RESULT OF THE TEST : FAIL		
<p>Example of report can permit to save or print quality data of device under test. It was generated by the software "Amaya". Then treated directly during the execution of a program in Winpass 5000. For treatment in Winpass the command is: CRT (Original file) (Destination file)</p> <p>Calling variable is done by dollar sign, \$.</p> <p>There are systems variables. As the time stamp, the tester name, the result of test ... A sample is described in the report on the directory: <a href="#">C:\SEFELEC\Winpass5000\Projects\Demo\CTRHTML1</a> Other variables can be implanted during the execution. As the dialog box fields, the value of measurement ...</p>		
UK_OUT_simulator_Finalized_12344azet.PDF		

**Management of tester / product interfaces** with connector libraries and automatic generation of equivalence tables.



## Test and measurement devices controlled by Winpass-5000

<b>SEFELEC</b>	Ranges MG, XS and 5X, 1500M, MGR10 RMG12&15, EXS3200, E5X3200
<b>TDK-LAMBDA</b>	Power supplies GEN and GEN-Plus series
<b>KEYSIGHT</b>	34461A multimeters, RLC bridge 4263B Power supplies 6632B; 6612C, 6643A
<b>KEITHLEY</b>	SourceMeters from the 2400 series (RS232): 2400, 2401, 2410, 2420, 2425, 2430, 2440, 2450, 2601 and 2611 Back connection DMM 6500
<b>WAYNE KERR</b>	RLC bridges 4300 & 6500 series

<b>KIKUSUI</b>	DC & AC voltage generator PCR500M, PCR1000M and PCR2000M
<b>ADLINK</b>	I/O board PCI7250, PCI7251
<b>SEFRAM</b>	Analogue recorders DAS600 and DAS800
<b>GW INSTEK</b>	Power supplies APS7000 series
<b>ITECH</b>	Power supplies It 7300 series
<b>AIM-TTI</b>	Power supplies Models PL068, PL155, PL303 and PL601

(please consult us for other T&M devices)

Functions	Description	WINPASS 5000 SYWINPASS-5K	WINPASS-5000 PREMIUM SYWINPASS-5KPRE
General functions			
User accounts	Number of user accounts	5	unlimited
Updates	Access to all updates (Winpass and firmware)	●	●
Languages	Software available in FR/EN/DE/CN/RU/KO.	●	●
Bench control	SYNOR 5000 models P/H/D/R/C	●	●
	Standalone / autonomous mode	●	●
Win PLC	Control of Winpass-5000 by an external application	●	●
Simplified HMI	Synthetic execution window (production or operator mode)	●	●
Networked device	Network operation (management of backup directories)		●
Reports and Gateways			
4200-5000 gateway	Transfer tool for Winpass-4200 test programs	●	●
Winpass Report	Preconfigured report format (rtf, pdf and xls)	●	●
Customised reports	Reports in user-customized and/or dynamic formats (txt, pdf, xls, html, doc, etc.)		●
Win Report	Dynamic test report creation tool		●
Win PV	A tool for summarizing multiple reports		●
Win Transfer	Tool for transferring Excel files into test sequences		●
Test programs			
Dialogue boxes	Classic dialogue boxes Winpass-4200 version	●	●
	Advanced dialogue boxes (drop-down lists, tick boxes, etc.)		●
Virtual mode	Mode for developing programs without connecting a tester (developer mode).		●
Bar code reader	A tool for managing and processing bar codes and peripherals		●
Management of variables	Advanced programming, creation and use of variables, variable files.		●
Loop management	Test loop management, conditional testing		●
Results analyses	Processing and analysis of results in a test sequence		●
Tester interface	Interface editor and generation of equivalence tables		●

## WINPASS-5000 TRAINING

To assist you in the operation of your SYNOR testers and the development of WINPASS-5000 programs, we organize training sessions, either remote, or on our premises or your site. These sessions are tailored to your use and testing environment. The topics covered include all your needs, such as:

- Creation of a test project
- Creation of a WINPASS test program
- Transfer of existing programs
- Customizing test reports
- User safety with a tester (working with high voltage measuring devices)
- Tester maintenance

Our Sales Department is at your disposal to advise you on the training most suitable for your requirements.

**Minimum PC requirements for Winpass 5000 and Winpass 5000 Premium:** Windows XP Service Pack 3 or Windows 7 (32-bit or 64-bit) or Windows 10 (32-bit or 64-bit) / 2 GB RAM / I3 processor / Video 32-bit, 60 hertz, resolution 1280×1024 / Ethernet port / DVD drive or USB port for software installation.