

Product Datasheet - Technical Specifications



More information in our Web-Shop at ► www.meilhaus.com and in our download section.

Your contact

**Technical and commercial sales, price information,
quotations, demo/test equipment, consulting:**

Tel.: **+49 - 81 41 - 52 71-0**

FAX: **+49 - 81 41 - 52 71-129**

E-Mail: sales@meilhaus.com

Downloads:

www.meilhaus.com/en/infos/download.htm

Meilhaus Electronic GmbH
Am Sonnenlicht 2
82239 Alling/Germany

Tel. **+49 - 81 41 - 52 71-0**
Fax **+49 - 81 41 - 52 71-129**
E-Mail sales@meilhaus.com

Mentioned company and product names may be registered trademarks of the respective companies. Prices in Euro plus VAT. Errors and omissions excepted.
© Meilhaus Electronic.

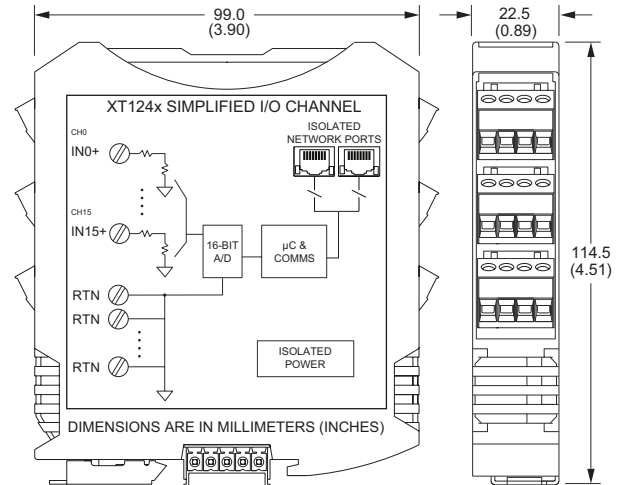
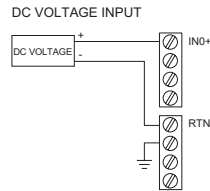
www.meilhaus.de

Ethernet I/O: BusWorks® XT Series

XT1240 Ethernet Analog Input Modules



EXAMPLE INPUT CONNECTIONS



16-channel single-ended analog voltage input ♦ Modbus TCP/IP, Ethernet/IP, Profinet, or i2o communication

Description

The XT1240 offers an isolated Ethernet network interface for up to sixteen single-ended voltage input channels. Single-ended inputs enable a higher channel density to save space and a lower cost per channel.

Rugged construction, high density design, and easy USB-to-PC/Windows setup combine for a very effective and reliable module. These units are ideal for remote monitoring, distributed control, or SCADA applications.

Input Ranges

DC Voltage:
±5V, ±10V, 0 to 5V, 0 to 10V

Ethernet Communication

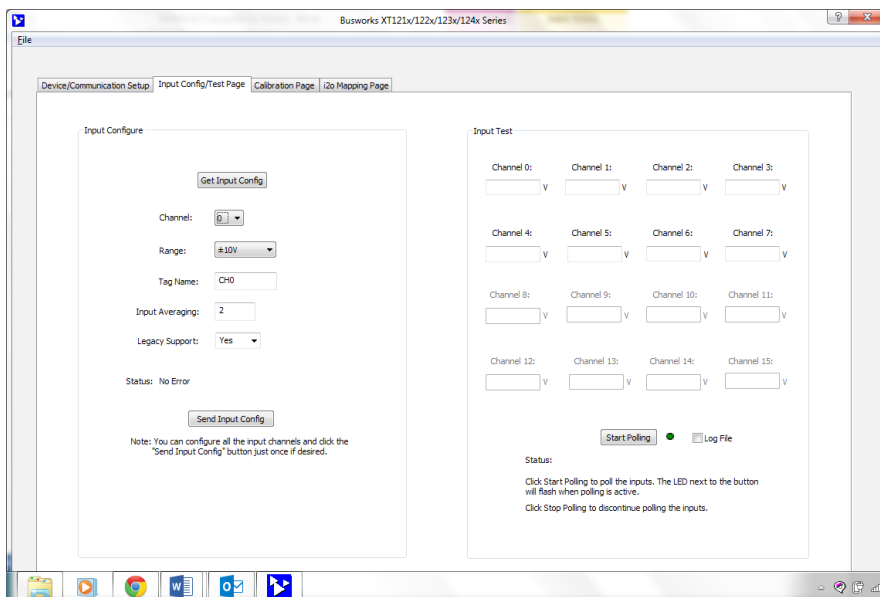
Modbus TCP/IP, Ethernet/IP, Profinet, i2o® peer-to-peer, 10/100Base-T(X) PriorityChannel™ device determinism

Power Requirement

12 to 32V DC (2.8W)

Key Features & Benefits

- Easy setup with Windows software via USB
- High input impedance (100K ohms) reduces loading on voltage loops
- User-configurable sample averaging (1-200) on a per-channel basis
- 10ms network updates for all 16 input channels
- i2o peer-to-peer updates based on percent-of-change and/or timed updates
- High-resolution 16-bit Σ - Δ A/D converter ensures precise, high accuracy measurements
- High-Density 22.5mm wide package with pluggable, front-facing terminals
- Dual Ethernet 10/100 ports (auto-negotiation) reduce switch port requirements
- 1500V AC isolation (between I/O, power, and network ports) and surge/transient protection
- Supports bussed/rail and redundant power
- -40°C to +70°C wide temperature operation
- Withstands 25g shock and 4g vibration
- CE compliant. UL/cUL Class 1 Div 2 Zone 2 approvals. ATEX Certified.



BusWorks XT software (download free from www.acromag.com) allows you to configure I/O modules offline with USB or save the configuration file and download settings into units later at your convenience.





Ethernet I/O: BusWorks® XT Series

XT1240 Ethernet Analog Input Modules

Performance Specifications

IMPORTANT: To prevent damage or errors from grounded PCs and surges, Acromag strongly recommends use of the USB-ISOLATOR when configuring an XT1000 I/O module.

■ USB Interface

USB Connector

Type: USB Mini-B type socket, 5-pin
Data rate: 12Mbps. USB v1.1 and 2.0 compatible
Maximum cable length: 5.0 meters

USB Transient Protection

Transient voltage suppression on power and data lines

Driver

Not required. Uses Windows HID drivers

■ Input

Accuracy

±0.05% of span, typical for nominal input ranges

Analog to Digital Converter (A/D)

16-bit Σ - Δ converter. 351.6uV/bit resolution.

Noise Rejection

Better than -110dB @ 60Hz

Input Filter Bandwidth

-3dB at 25KHz, typical

Input Conversion Rate

10mS for all 16 input channels

Input Impedance

105.2K ohms

■ Ethernet Communication

Protocols

Modbus TCP/IP, i2o peer-to-peer, Ethernet/IP, or Profinet depending on model number.

Ethernet Communication Controller

Innovasic RapID™ Platform with PriorityChannel™ for determinism at the device regardless of network load.

Modbus TCP/IP (slave)

Port 502 reserved. Supports up to 10 sockets.

i2o Peer-to-Peer (master/slave)

Can map each of 16 analog input channels separately to output channels. Timed (1-65535 sec) or percent-of-change updates. Supports GPRS/GSM systems.

Ethernet/IP (adapter)

Supports 10 connections. EDS file on website.

Profinet (server)

Supports 1 connection. GSDML file on website.

Connectors

Two shielded 8-pin RJ-45 sockets, 10BaseT/100BaseTX.

Wiring

Auto-crossover for MDI or MDI-X

IP Address

User-configurable. 192.168.1.100 default IP address

Data Rate

Auto-negotiated, 10Mbps or 100Mbps

Compliance

IEEE 802.3, 802.3u, 802.3x

■ Environmental

Operating temperature

-40 to 70°C (-40 to 158°F)

Storage temperature

-40 to 85°C (-40 to 185°F)

Relative humidity

5 to 95% non-condensing.

MTBF: 458,991 hrs. at 25°C

338,846 hrs. at 40°C

Power Requirement

12 to 32V DC, 2.8W maximum
(113mA maximum @ 24V)

Isolation

4-way isolation between I/O channels, network (each port), and power.

Peak: 1500V AC, ANSI/ISA-82.01-1988

Continuous: 250V AC, 354V DC

Shock and Vibration Immunity

Vibration: 4g, per IEC 60068-2-64

Shock: 25g, per IEC 60068-2-27

Electromagnetic Compatibility (EMC) Compliance

Radiated Emissions: BS EN 61000-6-4, CISPR 16

RFI: BS EN 61000-6-2, IEC 61000-4-3

Conducted RFI: BS EN 61000-6-2, IEC 61000-4-6

ESD: BS EN 61000-6-2, IEC 61000-4-2

EFT: BS EN 61000-6-2, IEC 61000-4-4

Surge Immunity: BS EN 61000-6-2, IEC 61000-4-5

Approvals

CE compliant. UL/cUL listed. ATEX Certified.

Designed for Class I; Division 2; Groups ABCD; Zone 2.

☞ II 3 G Ex nA IIC T4 Gc -40°C ≤ Ta ≤ +80°C

■ Physical

General

General purpose plastic enclosure for mounting on 35mm "T-type" DIN rail.

Case Material

Self-extinguishing polyamide, UL94 V-0 rated, color light gray. General purpose NEMA Type 1 enclosure.

Circuit Board

Military grade fire-retardant epoxy glass (IPC-4101/98)

I/O Connectors

Removable plug-in type terminal blocks rated for 12A/250V; AWG #26-12, stranded/solid copper wire

Dimensions

Width = 22.5mm (0.9 inches), Length = 114.5mm (4.51 inches), Depth = 99.0mm (3.90 inches)

Shipping Weight

0.5 pounds (0.22 Kg) packed

Ordering Information

◆ Models

[XT1241-000](#)

16-channel single-ended voltage input module, Modbus/TCP and i2o protocol

[XT1242-000](#)

16-channel single-ended voltage input module, Ethernet/IP protocol

[XT1243-000](#)

16-channel single-ended voltage input module, Profinet protocol

◆ Software

[XT-SIP](#) (recommend one kit per customer)

Software Interface Package. Includes software (XT-CONFIG), isolator (USB-ISOLATOR), two USB cables (4001-112, 4001-113), Ethernet cable (5035-360).

◆ Accessories

[XT BUS-KIT](#)

DIN rail bus power/excitation connector kit. Includes one DIN rail bus connector (1005-070), one left-side female connector terminal block (1005-220) and one right side male connector terminal block (1005-221).

[USB-ISOLATOR](#)

USB-to-USB isolator, includes USB cable (4001-112)

[P55R-VD24](#)

Power supply (24V DC, 2.5A)

[DIN RAIL 3.0](#)

[DIN RAIL 16.7](#)

DIN rail strip, Type T, 3 inches (75mm) or 16.7 (425mm)

[20RM-16-DIN](#)

19" rack-mount kit with DIN rail

ISO9001
AS9100

